

WIN PRIZES FOR YOUR NEW BATHROOM WORTH OVER £6000!

# KITCHENS BEDROOMS BATHROOMS

AUGUST 2016

£3.99

## Think outside the box

Clever ideas to  
bring your kitchen  
in on budget

SEE MORE OF  
THIS KITCHEN  
PAGE 121

### **Bedrooms**

Beautiful furniture  
and savvy storage

### **Appliances**

Built-in models for  
a sleek finish

### **Real homes**

Interiors to inspire  
your own project

## Smart solutions for small bathrooms

**Also inside:** Create an oasis with summer styling for  
your garden, plus six of the best portable barbecues





## Case study



**Designer:** Rebecca Ruff.

**Location:** Rebecca's own five-bedroom Victorian semi-detached family home in south-west London.

**The project:** To relocate and build a bigger bathroom.

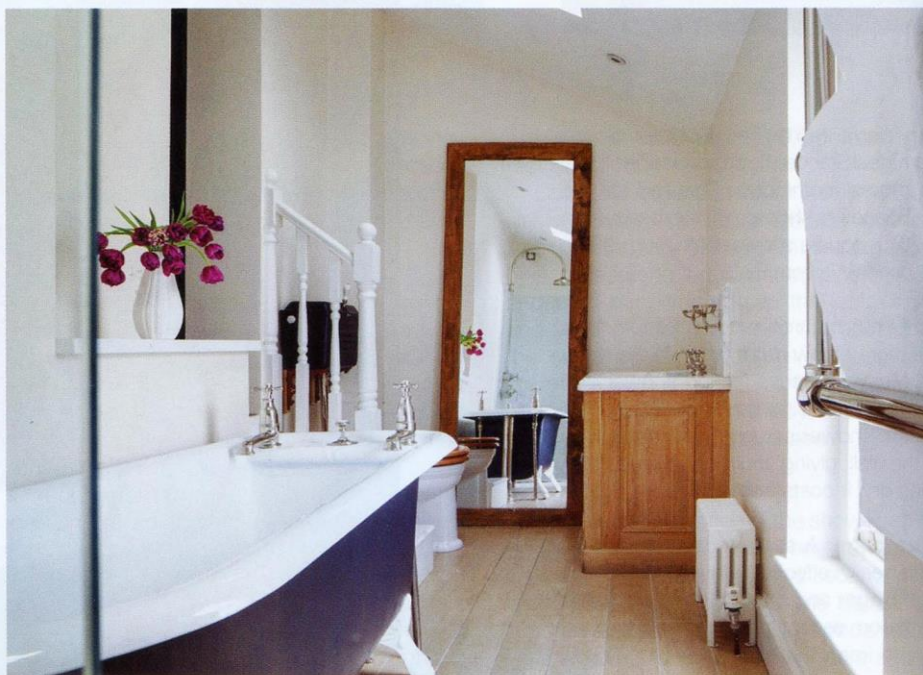
"The existing bathroom was tiny," recalls Rebecca, "so we got planning permission to build a new room above the ground-floor utility room on the side of the house, which would be accessed through the old bathroom (now a dressing room)."

According to planning and conservation regulations, the new bathroom had to be long and thin with a pitched roof. Despite its narrow proportions, however, Rebecca decided on a cast-iron freestanding tub, basin and traditional-style WC from Drummonds. "I felt larger pieces would make the space seem bigger," she says. "It's strange logic perhaps, but I think it worked."

She continues, "We have bought lots of reclaimed and new items from Drummonds in the past and love its products. Some of these items were bought ex-display, including the bath that was bigger and heavier than we had planned for!"

The shower area is 1m-wide x 2m-long with a plain glass screen that lends an open feel to the room. "We kept the walls off-white and put light-coloured ceramic tiles on the floor that look like wooden floorboards," explains Rebecca. "This restrained palette shows off the bath and shower really well."

Because the conservation committee insisted on a steeply sloping roof lower than Rebecca had originally planned, she had to be quite creative with steps down into the bathroom. "The waste pipe from the bath fits through the middle of the bottom step!"







**Above:** Glamour from the silver screen: a sparkling light fitting from the 1950s hangs above the bed.

**Above right:** The walk-in wet zone is screened by a frameless panel of glass, its wall and floor clad in Italian marble in keeping with the classic glamour of the room.

**Right:** The Tay freestanding bath has a hand-gilded exterior and is set under the window as the main focal point of the master ensuite.







**Left:** The joinery was custom-made to Linda's design, featuring mirrored panels on oyster-tinted wood and bespoke hand-blown glass handles, made by an artist in Miami.

**Above:** Tucked into a wall niche, the four-bar rail warms plenty of luxurious towels.

## SourceBook

### DESIGN

**Interior design** Homerun Services (020 7935 8899 or [www.homerunservices.co.uk](http://www.homerunservices.co.uk))

### KITCHEN

**Cabinetry** Xila in Arctic White Ecolak, Boffi (020 7590 8910 or [www.boffi.com](http://www.boffi.com))

**Worktops, sink and splashback** Glacier White Corian, DuPont (0800 962116 or [www.dupont.co.uk](http://www.dupont.co.uk))

**Appliances** Ovens, warming drawers, induction hob and integrated extractor, all Gaggenau (0844 892 8988 or [www.gaggenau.com/gb](http://www.gaggenau.com/gb))

**Taps** Mixer tap, for similar try Gessi Oxygen, Sterling (01629 299555 or [www.sterlingdistribution.co.uk](http://www.sterlingdistribution.co.uk)); Boiling-water tap, Quooker (0345 833 3555 or [www.quooker.co.uk](http://www.quooker.co.uk))

**Flooring** Limestone. For similar try Mandarin Stone (01600 715444 or [www.mandarinstone.com](http://www.mandarinstone.com))

**Dining table** Bespoke, Homerun Services, as before

**Chairs** Drop by Fritz Hansen, Skandium (020 7584 2066 or [www.skandium.com](http://www.skandium.com))

**Suspension and wall lights** For similar try John Cullen (020 7371 5400 or [www.johncullenlighting.co.uk](http://www.johncullenlighting.co.uk))

**Outdoor dining chairs** Net, Kettal (020 7371 5170 or [www.kettal.com](http://www.kettal.com))

### MASTER BEDROOM

**Bed cover, cushions, curtains, bespoke shades and upholstered wall fabric** Bruno Triplet BO68-29 Oyster backed silk, Sahco (020 7352 6168 or [www.brunotriplet.com](http://www.brunotriplet.com))

**Bed and bedside cabinets** Bespoke, Homerun Services, as before  
**Bedside lamps** For similar try Heathfield & Co (01732 350450 or [www.heathfield.co.uk](http://www.heathfield.co.uk))

**Dressing table chair** For similar try Doris, Nina Campbell (020 7225 1011 or [www.ninacampbellinteriors.com](http://www.ninacampbellinteriors.com))

**Dressing table and mirror, wall mirror, armchairs, floor lamp, ceiling lamp and glass tray** All 1950s originals. For similar try 1stdibs ([www.1stdibs.com](http://www.1stdibs.com))

### MASTER ENSUITE

**Bath** Tay, Drummonds (020 7376 4499 or [www.drummonds-uk.com](http://www.drummonds-uk.com)), with hand-gilded finish by Homerun Services, as before

**Brassware** Mandarin clear crystal and nickel, Bathrooms International by THG (020 7838 7788 or [www.thg.fr](http://www.thg.fr))

**WC** For similar try Subway wall-hung, Villeroy & Boch (020 8875 6006 or [www.villeroy-boch.co.uk](http://www.villeroy-boch.co.uk))

**Towel warmer** For similar try four-bar wall-to-wall, Drummonds, as before

**Vanity unit and cupboards** Bespoke, Homerun Services, as before  
**Wall mirrors and chandelier** 1950s originals. For similar try 1stdibs, as before

**Wall cladding and flooring** Italian marble. For similar try Lapidica (020 3012 1000 or [www.lapidica.com](http://www.lapidica.com))

### COST

A Xila kitchen from Boffi starts from £36,000, while a similar bedroom and ensuite would cost from around £10,000 each





Illuminated mirrors add a pretty decorative touch above the basins, while the figure-of-eight-style chandelier is another 1950s find.