

# HOUSE & GARDEN®

July  
2017  
£4.30

## Summer Living

ON THE COVER  
A pool house  
in Provence

DESIGN  
IDEAS  
FOR WOOD  
FLOORS

PLUS  
ART FOR  
UNDER  
£500



**THE TRANSFORMATION OF A PROVENÇAL RETREAT**  
**A TRANQUIL COTSWOLD BOLT-HOLE**  
**THE GARDENS OF A HEREFORDSHIRE FARMHOUSE**  
**RECIPES INSPIRED BY THE CORNISH SEASIDE**



# HOUSE & GARDEN<sup>®</sup>

July  
2017



PRODUCED BY  
**HOUSE  
& GARDEN**  
BESPOKE

*An inspirational guide to*  
**KITCHENS  
& BATHROOMS**



# MAKE A SPLASH

BEAUTIFUL BATHS IN EYE-CATCHING DESIGNS, COLOURS AND INNOVATIVE MATERIALS



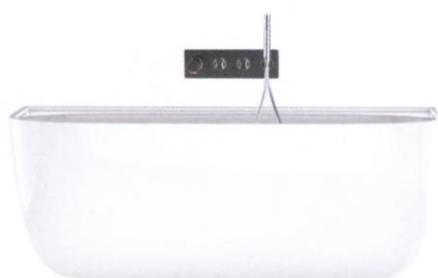
**'Geminus Advance'** Iso-Enamel cast stone bath (red), from £1,898, from The Albion Bath Company. [albionbathco.com](http://albionbathco.com)



**'Versailles'** enamelled cast iron bath (blue grass), £1,975, from Fired Earth. [firedearth.com](http://firedearth.com)



**'Hanover'** cast iron bath (yellow), from £1,258.44, from Aston Matthews. [astonmatthews.co.uk](http://astonmatthews.co.uk)



**'Eldon'** Quarrycast 'back-to-wall' bath, by Conran + Partners, from £2,880, from Victoria + Albert Baths. [vandabaths.com](http://vandabaths.com)



**'Leighton'** polymarble freestanding bath, from £2,599, from Thomas Crapper. [thomas-crapper.com](http://thomas-crapper.com)



**'Lunetta'** Cristalplant freestanding bath, £8,080, from West One Bathrooms. [westonebathrooms.com](http://westonebathrooms.com)



**'Holywell'** acrylic single-ended bath (gold effect), from £2,150, from Heritage Bathrooms. [heritagebathrooms.com](http://heritagebathrooms.com)



**'Wye'** cast iron bath with hammered copper finish, £10,140, from Drummonds. [drummonds-uk.com](http://drummonds-uk.com)



**'Bateau'** copper bath with brushed nickel finish, from £5,062, from William Holland Ltd. [williamholland.com](http://williamholland.com) □





# BRAVE THE ELEMENTS

Pattern, interesting materials and geometric shapes inspire these bathroom schemes

PHOTOGRAPHS DAMIAN RUSSELL STYLING FLORENCE ROLFE

**1 & 2** 'Plummett' and 'No 256 Pitch Black' paint, £43.50 for 2.5 litres modern emulsion, from Farrow & Ball. **3** 'Obsidian' wallcovering (snowflake), by Anthology, £225 a 300 x 140cm panel, from Wallpaper Direct. **4** 'Plume' antiqued brass wall light, £792, with gathered silk shade, 50.5 x 20cm, £200, both from Porta Romana. **5** 'Olimpo' Wet System waterproof wallpaper, by Wall&Deco, around £185 a square metre, from West One Bathrooms. **6** 'Apollo' Calacatta Viola marble basin, 90 x 40.6cm diameter, £695, from Mandarin Stone. **7** 'Mayfair' silver nickel shower tray, 120 x 80cm, £6,000, from Catchpole & Rye. **8** 'Dalby' shower with curved arm and shamrock rose head, £4,674, from Drummonds. **9** 'Silver Mirror' glazed polished porcelain tiles, 60cm square each, £130.80 a square metre, from Lapidia >





**1** 'Plummett No 272' **paint**, £43.50 for 2.5 litres modern emulsion, from Farrow & Ball. **2** 'Zen' **tap handles** in finished metal, Bianco Carrara, Honey Onyx, Ice White Onyx and Nero Marquina, from £212 each, from The Watermark Collection. **3** 'Rockwell' ceramic **crossheads** (white, black, grey, blue, green, orange and lilac), from £768 including taps and spout, from The Water Monopoly. **4** 'Pitch Black' **paint**, £43.50 for 2.5 litres modern emulsion, from Farrow & Ball. **5 & 6** 'Marmo' white Carrara marble round **soap holder**, £351.75, and **soap dish**, £285.80, from C P Hart. **7** 'Zebrano' wooden **shave set**, £425, from Czech & Speake. **8** 'Francis Grand' **mirror** with aluminum frame, 61cm diameter, £398, from Petite Friture. **9** 'Dalby' **pendant light** with glass shade, 36.5 x 14.7 x 20.1cm, £378, from Drummonds. **10** 'Obsidian' **wallcovering** (azurite), by Anthology, £225 a 300 x 140cm panel, from Wallpaper Direct. **11** 'Asteroid' blown glass with nickel-plated brass **pendant light** (crusty grey) & **12** 'Luna' **pendant light** (grey swirl), both 22 x 24.5cm, £1,440 each, from Porta Romana. **13** 'Nahbi Bowl N 9' marble **basin and tray**, £3,696, from West One Bathrooms. **14** 'Oxford and Cambridge' silver aluminium **shave set and stand**, £375, from Czech & Speake. **15** 'Mimica Arabescato Oro Gloss' glass and porcelain **tiles**, from £76.50 a square metre, from Mandarin Stone. For suppliers' details, see Stockists page □

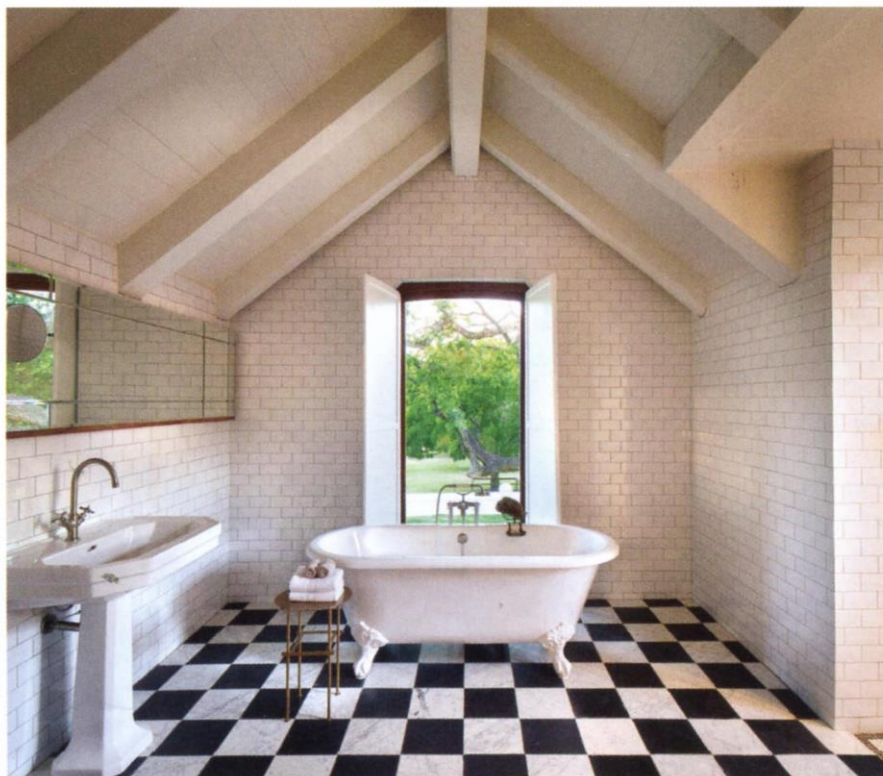




**THE WOW FACTOR** Mirrored double doors with an etched and gilded diamond pattern create a glamorous link with the main bedroom in this opulent scheme by Alidad. The polished plaster walls are covered with a trellis design, which is echoed by the mother-of-pearl-clad tub from Bette Baths. A 'Tradition' tap by THG Paris is mounted in a bespoke lion-head design and ensures you can sit comfortably at both ends of the bath. [alidad.com](http://alidad.com)



**PRETTY IN PINK** This 'Spey' free-standing bath from Drummonds was painted in a bespoke salmon pink to match the flooring. [drummonds-uk.com](http://drummonds-uk.com)



**CHECKMATE** With elegant ball and claw feet, the 'Cheshire' is one of Victoria + Albert's more traditional baths. It sits comfortably in the Queen Bee suite at Babylonstoren farm, continuing the Cape Dutch style of the hotel. [babylonstoren.com](http://babylonstoren.com) | [vandabaths.com](http://vandabaths.com) ▷





**FRESH TAKE** An antique chest of drawers from Ebay is reincarnated as a vanity unit with fresh lacquer and a basin and taps by C P Hart. The mirror from Vaughan reflects the pretty pattern of the 'Pyne Hollyhock' wallcovering by Schumacher. [cphart.co.uk](http://cphart.co.uk) | [fschumacher.com](http://fschumacher.com)



**SIT PRETTY** Panelling and wallpaper create the backdrop for this 'Brora WC Suite' and throne loo seat. The tall cistern adds drama. [drummonds-uk.com](http://drummonds-uk.com)



**BRONZE AGE** Designer Peter Mikic used wall sconces, an oversized mirror and 'Tara' taps from Dornbracht to striking effect. [petermikic.com](http://petermikic.com)



**THINK PINK** To fulfil the brief of making this loo in a London townhouse as pretty as possible, interior designer Veere Grenney used pink lacquer for the walls and sourced a beautiful antique-style sink from The Water Monopoly. [veeregrenney.com](http://veeregrenney.com) >