

THE HOMES MAGAZINE FOR MODERN LIVING

Livingetc

APRIL 2018 / £4.60 US \$9.99 / CAN \$10.99 / AUS \$9.99 / NZ \$11.50

MODERN STYLE

BEAUTIFUL HOMES FULL OF
INSPIRING IDEAS. PALM TREE ANYONE?

DARK AND WILD
New style trends –
from Scandi noir to rustic Navajo

HOLLYWOOD'S HOTTEST

Behind the scenes with
LA's favourite interior designer

CEILINGS – THE FIFTH WALL

Take your decorating sky-high

SHOPPING EDIT

- * BOHO BEADED CHANDELIERS
- * ELEGANT COFFEE TABLES
- * COOL CONVERSATION CHAIRS



RECALL: 4/4/2018

CLEVER CORNICING

Georgian and Victorian-era ceiling design has enduring appeal. Cornicing originally existed to cover the untidy joins between walls, the ceiling and floor, but has become more decorative over the years. Use it to add definition and weight to a room, or to enhance the presence of a chandelier – it finishes off a space with flair. Retain or reinstate as many features as possible if you have a period property – damaged parts can be reproduced to match the original. If you're not averse to a little tampering, you can create a cornice as opposed to restoring it. 'Choose a style that suits the period of the house,' says Anna Hewitson, founder of Anna Hewitson Design. 'Wrap the cornice around the top of any cabinetry too, so it feels part of the room.' Balance its bold look with neutral walls – classic white is the go-to for decorating purists – and metallic finishes.

↑ **Project details** Homeowner Alex Mahon kept her bathroom classic with floral Victorian cornicing and a ceiling rose accented with grey paint. Little Greene's *Inox absolute matt emulsion*, £59 for 2.5L, is similar. For a similar ceiling, try *Plaster Ceiling Roses*, price on request. This is the *Spey bath*, £3,570; and *Classic bath mixer taps*, £2,448, both by Drummonds.



[HOW TO RESTORE YOUR CEILING]

Ensure your cornicing, coving and architrave look their best

* BACK TO BASICS

'There are many things you'll have to consider,' says Susie McLaren, creative head of residential interiors at SHH Architecture & Interior Design. 'Are the features protected; is the house listed; and are they authentic?'

* INSPECT IT

'There might be decay due to water penetration or rotting,' says Rupert Cordle of master building company Cordles. 'Look to see if there are large cracks or crumbling that should be repaired at the same time as any elements are restored.'

* THE BIG REVEAL

'If decorative features have been painted over, then subtle details and edging may be lost under a thick layer of paint,' Cordle adds. 'Make sure you strip back the paint before.'

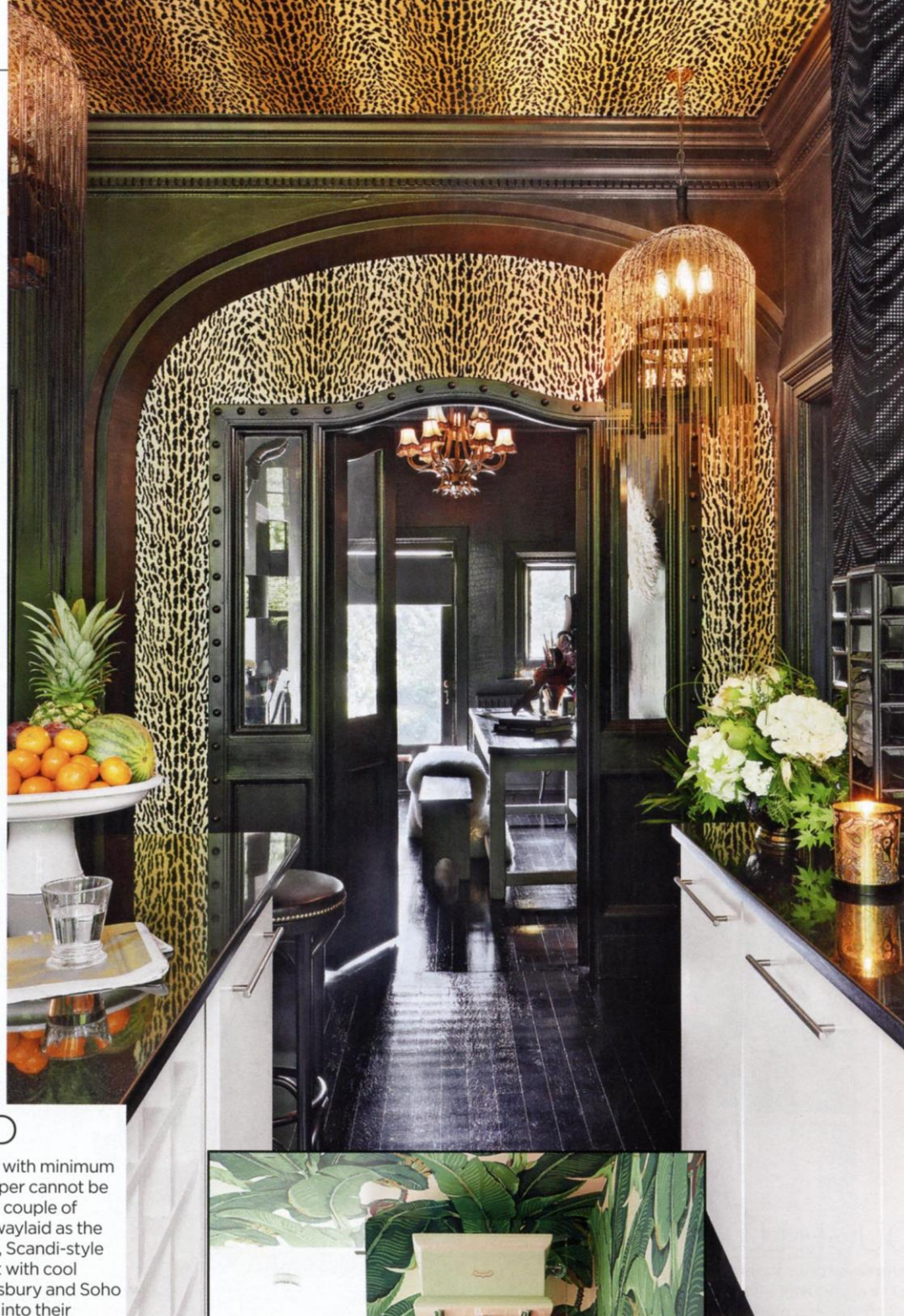
* BE FLEXIBLE

'Traditional plasterwork is flexible and allows movement in the building without cracking. Any new materials must do the same,' says Cordle. 'Decorative ceilings may also contain asbestos, so employ an expert.'

* DON'T SKIMP

Don't try to save money by not using a specialist. 'Decorative plaster restoration requires expertise,' says Cordle.

← **Project details** Owners Jeremy, an architect, and Sarah Flavell, an interior designer, chose a panel moulded ceiling made with decorative plasterwork. Try *Simply Mouldings* for similar, price on request. The island was clad by *Glassology*, approx £9,500. The wall colour is *Farrow & Ball's Elephant's Breath* estate emulsion, £45 for 2.5L.



GO BOLD

For maximum payoff with minimum effort, printed wallpaper cannot be beaten. All the rage a couple of decades ago, it was waylaid as the trend for pared-back, Scandi-style spaces took hold, but with cool hotels like the Bloomsbury and Soho House working them into their rooms, we're falling back in love with wallpaper. A space filled with colour and pattern makes an impact, but wallpapered ceilings have many other positive attributes. Papering a whole wall or several walls will cocoon a space and lend it an intimate feel. Wallpapering most rooms is a straightforward, if time-consuming process, but for a bathroom, hire a professional, suggests Paula Taylor, colour and trends specialist for Graham & Brown. 'Vinyl-backed wallpaper helps to avoid air bubbles and premature peeling,' she says. 'There are also splash-proof and antibacterial ranges that are highly durable for bathrooms too. A professional decorator will be able to advise on the appropriate materials for a high-spec finish.'



↑ **Project details** The ocelot-print wallpaper on the ceiling and lining the arch is Pantanal, £124 a roll, by Osborne & Little at John Lewis.



← **Project details** Find similar tropical leaf wallpaper at Murals Wallpaper, £36/sq m, or try the Banana Leaf wall decoration, £127, by IXXI at Selfridges. This is Drummonds' Brora high-level WC suite, £2,334.

Livingetc

BATHROOMS

2018



TRENDS | INSPIRATION | SHOPPING



SPLASH OUT

Good things come to those who wait. This stunning Serpentine bath by Drummonds is the perfect example. Finished to order, Serpentine is available with a cast-iron skirt, pictured, or with Deco cast-iron feet. From £3,390 (drummonds-uk.com)



INTELLIGENT HYGIENE

In-Wash by Roca combines all the functionality of a WC with the cleaning properties of a bidet. Adjustments to water and air temperature, pressure and positioning are all remote control-operated. £2,398 (uk.roca.com)



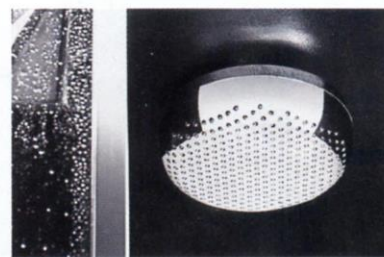
THE PERFECT BLEND

Brass is relishing the spotlight this season. And Matki has embraced the material with its Classica collection, featuring shower enclosures, wet room panels and bath screens made from pure brass. Polish or leave to develop a rich patina over time. Try pairing with marble or marble-effect tiles for the epitome of modern luxury. Prices on request (matki.co.uk)



VANITY FARE

Designed to match its hand-decorated porcelain basins, the Noah vanity by The London Basin Company is handmade in mild steel and finished in metallic copper. It comes with the option of an integrated tall mirror and top in black or white laminate. £1,200 (londonbasincompany.com)



BREAKING THE MOULD

Bold design isn't something Zucchetti. Kos shies away from. True to form, its WaterCandy hand shower pushes the boundaries by challenging the conventional look and functionality of a traditional variety. It can also be used to massage the body. Use the back strap to hold the showerhead like a loofah and let the soft silicon nozzles work their magic. Price on request (zucchettikos.it)

EXPERT ADVICE

Surface issues

Amir Reske, managing director of Caesarstone UK, on quartz as the savvy surface choice

* Quartz is waterproof and highly resistant to mould and mildew, making it the perfect material for damp or wet areas such as showers, wet rooms and bathrooms. It is usually fitted to bathrooms in larger panels or single pieces, resulting in fewer gaps and grout lines, which means fewer places for dirt to hide or water to leak.

* Not only does quartz last longer than almost all other surface options, but it's easier to clean and will stay looking good for longer. Quartz doesn't need sealing, treating, polishing or any other form of maintenance. A simple wipe clean with a mild household detergent and warm water will usually suffice. This makes quartz surfaces a practical, hygienic solution for a myriad of uses in bathrooms and wet rooms.

* The hard mineral is one of nature's toughest, making surfaces impervious to scratches and staining, ensuring they withstand the rigours of even the most well-used family bathroom. There's also an enormous variety of colours and patterns to choose from. For traditional and luxury schemes, opt for styles such as White Attica and Calacatta Nuvo. For the modern loft look, try Rugged Concrete.

* This versatile material can be used for everything from shower returns, wall cladding and bath surrounds to splashbacks and flooring. High-quality quartz can even be thermoformed into curved shapes.

Rugged Concrete composite quartz, from £500/sq m (caesarstone.co.uk)

ORIENT EXPRESS

Take a style journey East, embracing rich shades

It's no surprise that the interiors world has fallen head over heels for the charms of the East – after all, any opportunity to restore a sense of serenity is welcome in our busy lives. Embrace the aesthetic by picking a rich colour palette and brightening it with glints of gold or chrome. Or you could embrace imperfection and channel the Japanese ethos of *wabi-sabi*. Either way, the modern oriental look is a great way to create a relaxing haven in your bathroom.



↑ **Get the look** This is the Spey freestanding cast-iron bath with a painted exterior, from £3,570; and Mull classic bath and shower mixer and H-stand, £2,628, all by Drummonds. The metro wall tiles from Michael Smith's Signature range for Ann Sacks, from £490sq m, at West One Bathrooms, are custom-made to order. Arte porcelain tiles, £50sq m, at Tiles & Stone Direct, are similar to these floor tiles.

→ **Get the look** This is the 3721IG deck-mounted basin mixer with a country spout and crosshead handles, from £693, by Perrin & Rowe. Try Bristan for a similar towel ring, from £46. Use Valspar's colour-matching service at B&Q to recreate the wall paint colour. Black Oak Builders makes a similar floating vanity shelf with a mirror, from £3,500.



PHOTOGRAPHY (MAIN IMAGE) RYAN PHILLIPS PHOTOGRAPHY/DEIRDRE DOHERTY INTERIORS; (INSET) NAI-LINH/DIMORE STUDIO



Combine antique brass and black marble for impact.
Thames vanity, £5,642, Drummonds



Get the Twenties look.
Arc washstand, £2,299,
Aston Matthews



Make yours the crown jewel of the bathroom.
Pinna Paletta console, £4,062, Laura Kirar
for Kallista at West One Bathrooms

CLASSIC WASHSTANDS

The humble basin gets
a glamorous vintage
treatment



Take a cue from Shaker furniture.
Mya washbasin with vanity unit,
£3,993, Ripples



Introduce a feminine look with soft curves.
Versailles console, £1,300, Fired Earth



Go for a mid-century scheme.
Ext Ray washstand and basin,
from £1,364, CP Hart



Less is more with this simple design.
Large basin washstand, £669, Clearwater
Baths at Pure Bathroom Collection



Marble never goes out of style.
Carrara marble top and basin with
basin stand, £1,144, Burlington



Channel the industrial vibe.
Broadway double basin, £4,984,
West One Bathrooms