

march 2021

# Livingetc

style **hots up**

SPRING'S NEW  
PALETTE THAT FEELS  
LIKE SUMMER

AFFORDABLE BUYS  
TO PACK YOUR HOME  
WITH PATTERN

YINKA ILORI'S  
JOYFUL COLOUR  
RULES

small space,  
big ideas

HOW TO GET THE MOST  
FROM EVERY CORNER

the  
bright  
side

bathroom directions  
THE LATEST LOOKS,  
MATERIALS AND MOODS

US\$ 39 CAN\$10.99 AU\$10.99 NZ\$13

£4.99

PRINTED IN THE UK

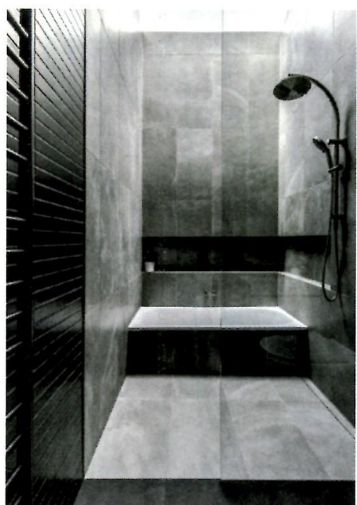
03 >

9 771461 918258

FUTURE



Modern luxurious schemes to energise your home



# bathrooms



# New concepts and insights from the world of washrooms

## EXPERT VIEW

### Serene spaces

Susie Atkinson, interior designer

**“Your bathroom should be a sanctuary.** It's the place you retreat to every day and an opportunity to have time to yourself. Bathrooms by their nature tend to have cold surfaces – flooring is often stone or tiles, and fittings are usually white enamel – yet the one thing you don't want to feel in a bathroom is cold. **I always like to ensure bathrooms feel warm and relaxing,** and there are a few ways to go about this. On a literal level, it's important to put in underfloor heating, wherever possible. **Consider what you want in your bathroom and how you want to use it.** I recently designed a bathtub with Drummonds and had a particular vision in mind for it – a relaxing soak while looking out the window into a garden. As a result, the Whitewater bath is higher than most, and shallower, with a really good back to it so it's unbelievably comfortable to sit in.

**I often think it's nice to have not everything specified from a bathroom supplier.** Perhaps pick out an antique mirror, or a pair of IP-rated wall lights from elsewhere.

**Focus on the textures –** wood is lovely in bathrooms, though you need to have a generously-sized space to avoid water damage. Introduce colour through towels and bath mats or slubby linen fabric at the window.

”



## TAKE A DIP

Thanks to innovative technology and time-honoured technique, BC Designs has introduced the first solid-surface bath that can be hand-painted in any colour – meaning you can match your tub to any bespoke shade you choose. **Omnia bath, from £2,940 (bcdesigns.co.uk)**

## Full points

Beautiful tiles are clearly in Claybrook's DNA and its new Bermuda Triangle design is an opportunity to get creative with tessellation. The six colours are all matt glazed, giving a homely tint to this directional shape, which work equally well as a splashback as it would to cover an entire shower. Mix, match and marvel. Bermuda Triangle tiles, £84.24/sqm (claybrookstudio.co.uk)

news





### Class act

Add a little character to your bathroom with vintage-style details. It might be an antique cabinet repurposed as a vanity unit or even new products that give a nod to period bathrooms – such as this traditional-style towel rail from Drummonds, which takes centre stage in front of a dark navy backdrop.

**GET THE LOOK** Interior design by Kingston Lafferty Design. Five-bar floor-mounted heated towel rail in nickel, £2,742, Drummonds



### Do the double

The luxurious addition of a Jack and Jill vanity unit can work well, even in a smaller space. 'We wanted this en suite to have an art deco, luxe feel,' says interior designer Laura Stephens. A double basin sits on a brass frame, which allows the decorative flooring and walls to be seen, providing a sense of space.

**GET THE LOOK** Bathroom design by Laura Stephens Interiors. Double basin, £2,580, The Water Monopoly. Mirrors, Vaughan