

KITCHENS BEDROOMS & BATHROOMS

BRITAIN'S
BEST-SELLING
KITCHEN,
BEDROOM AND
BATHROOM
MAGAZINE

JANUARY 20
£5

BEAUTIFUL

BOLD

dramatic

MEET THE
HOMEOWNERS
WHO DARED
TO BE DIFFERENT
WITH THEIR
DESIGNS

Win
An Insinkerator
bundle worth
£2000

How to
UPDATE YOUR SPACE

FROM A KITCHEN REFRESH

AND A BATHROOM REMODEL

TO A BEDROOM MAKEOVER

TAYLISTmedia



thesethreerooms.com

108



92

60



HOMES

78 DRAMATIC FAMILY KITCHEN *

Dark cabinetry, striking worktops, and dashes of colour create a welcoming space that is sure to wow family and friends

86 LIGHT-FILLED EXTENSION

Katharine and Adrian created a bright kitchen overlooking their beautiful courtyard garden

92 GLAMOROUS ENSUITE

Linda Adams transformed the cold, tired-looking master bathroom of her Arts and Crafts home into a luxurious, warm space

98 SOCIABLE OPEN-PLAN SPACE

When the pandemic stopped Susan and Clive Tyldesley's passion for travel, they turned to a different project: creating a new kitchen-living-diner

PROJECT *planner*

106 BEEN THERE, DONE IT

Jennifer Hitchman tells us all about her beautiful bathroom makeover

108 MATERIAL OF THE MONTH

Everything you need to know about brass

113 DRAWING BOARD

Our designers remodel a new-build property's kitchen to create a sociable space suited to busy family life

118 BEFORE YOU START

Why is assessing your space so important? And how do you do it correctly?

121 YOU ASKED

How can I create a fun and stylish cloakroom?

122 BUYER'S GUIDE

Your new shower tray sorted

127 CHECKLIST

Tick off your to-dos with our handy list to cut out and keep

**Subscribe
and save**
Only £39.52
for 12 issues
see page 16

Discover more design
advice and inspiration at...

these *three* rooms 
thesethreerooms.com

Get social with us
@kbbmagazine #kbbmag



By their very nature, bathrooms are where *we 'bare all'*

– so if you have a design where you don't feel comfortable in your own skin, it's time for a change. Homeowner Linda Adams can attest to this. "The master bathroom wasn't a place one wished to dwell – or to be naked – due to the sense of exposure, with reflective surfaces at every angle," she laughs. "The décor was from the 1990s, with lots of chrome and tired-looking white and grey marble floors, shower and walls. Overall, it was very cold due to the colours and materials."

As part of works to their 19th-century Arts & Crafts property, the new design features bold brass finishes, striking onyx-effect wall tiles and statement pieces from Drummonds. Linda's brief was to increase warmth using textures and colours, while also creating a sense of opulence. "The ensuite is accessed via a secret wardrobe door from the bedroom and so we also wanted the two spaces to speak the same design language," she adds.

The starting point for the design were the large-format floor and wall tiles – with a marble-effect and onyx-effect finishes – which minimise grout lines. "The ensuite is as large as the adjoining bedroom, so we embraced the grandeur of it, using a showpiece bath, traditional high-level cistern, extra-large showerhead and double basin, which suited the dimensions," Linda says.

The standout brass-clad bateau bath has been placed in the middle of the room and angled to take full advantage of the view from the window. The finish has been matched with the tall towel radiator and large overhead shower. "We love the warmth and elegance of brass, as opposed to chrome," Linda says. It is also the perfect accompaniment to the striking blue onyx-effect wall tiles.

Finally, a double vanity unit is both practical and stylish. "We had plenty of space, so a large unit with matching mirrors added a lifestyle element – both of us can communicate while getting ready to go out, with no compromise in terms of space for products." On the final design, Linda summarises: "We believe in making a home better than we find it – and as this is an Arts & Crafts house, it is our duty to give it a timeless, quality treatment." >



Linda wanted the bathroom and adjoining bedroom to "speak the same design language".
Bath, Drummonds.

The FACTS

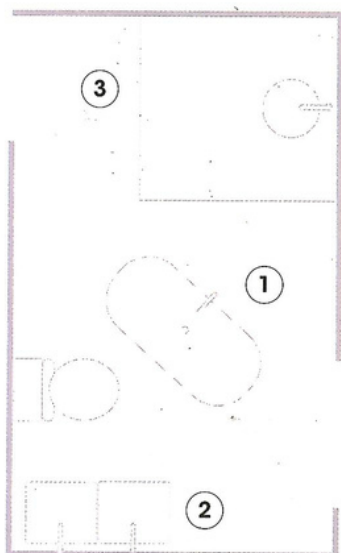
Who? Linda Adams with her family

What? A new ensuite as part of a total renovation to a 19th-century Arts and Crafts house

Where? Cheshire

Cost? A similar bathroom would cost around £100,000

Time? Six months



The PLANS

The ensuite, accessed through a secret wardrobe door via the bedroom, was transformed from a tired, uncomfortable space to feature warm finishes and opulent fixtures and fittings.

1 Bateau bath The tub takes centre stage and has been positioned at an angle to make use of the views outside.

2 Layout A double vanity is practical for getting ready.

3 Finishes The walk-in shower offers a generous footprint for a luxurious feel. It also features brass fixtures and fittings, matching the rest of the space.

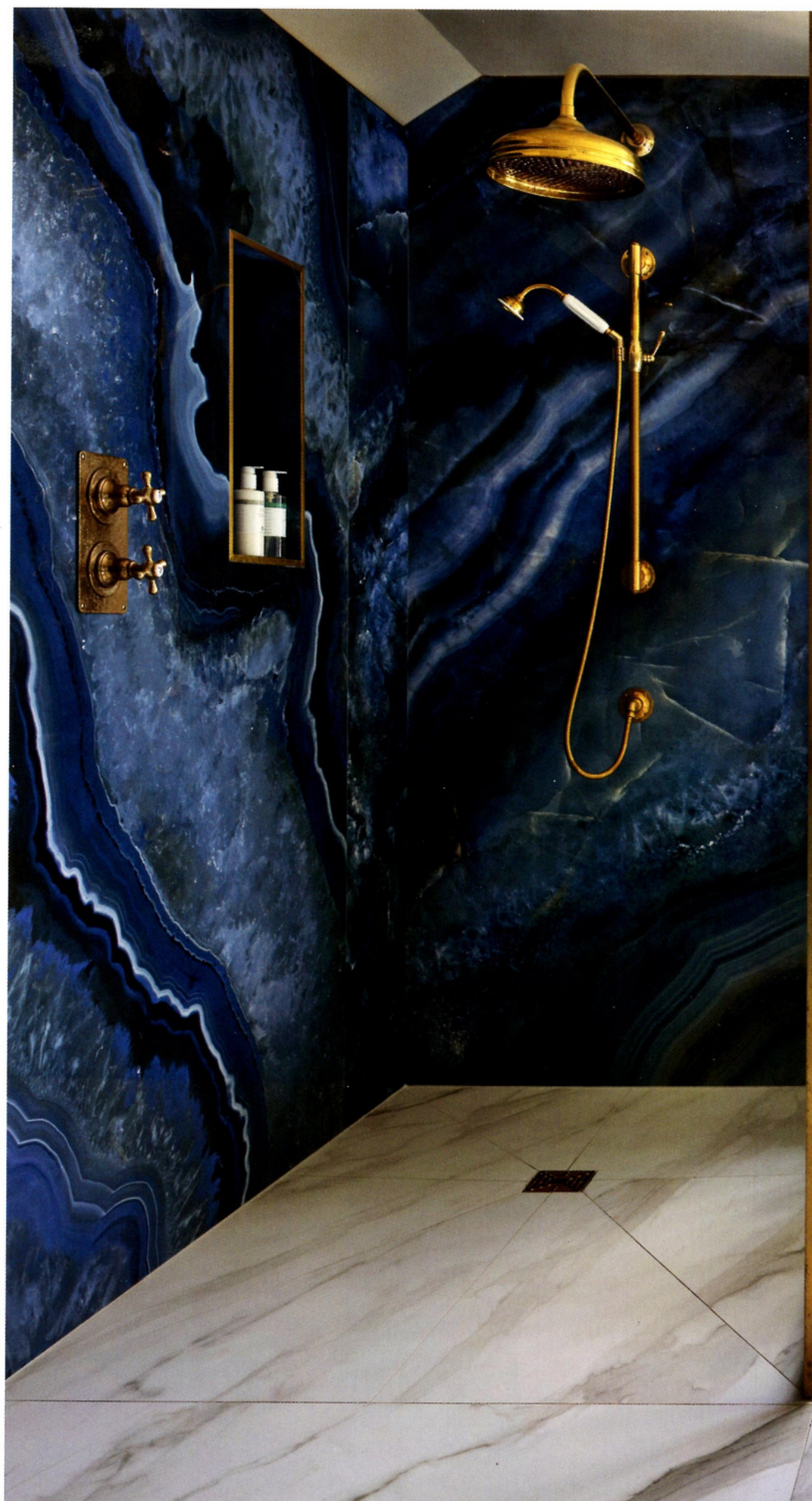
SOURCEBOOK

Fixtures and fittings

Drummonds 020 7376 4499
drummonds-uk.com

Wall and Floor tiles Tile By Tile
tilebytile.shop

For full stockist information,
see page 126. Search for
more suppliers at
thesethreerooms.com/directory >

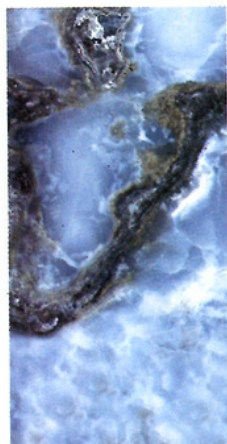


Grand in scale and style, the new space features bold brass finishes, striking onyx-effect wall tiles, from Tile by Tile, and statement fittings and fixtures, from Drummonds.



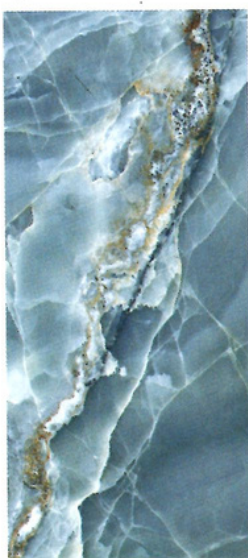


A large double vanity was chosen because it is practical and stylish at the same time. The marble countertop works well with the onyx-effect wall tiles.



1

2



DESIGN FOCUS

Onyx-effect tiles

1 Deluxe blue onyx-effect tiles, £51.95 per sq m, Walls and Floors. wallsandfloors.co.uk

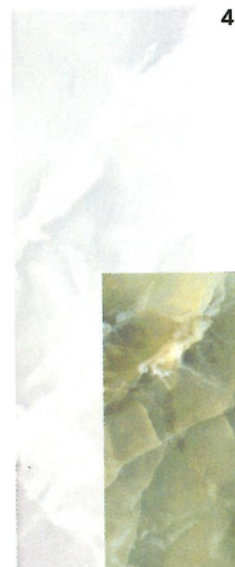
2 Jewel onyx porcelain tiles in Aqua, £69 per sq m, Porcelain Superstore.

porcelainsuperstore.co.uk 3 Merope onyx marble-effect tiles in beige, £33.99 per sq m, Tile Mountain. tilemountain.co.uk 4 Onyx Smoke marble-effect metro tiles, £36.74 per sq m, The London Tile Co. londontile.co.uk 5 Onyx

Nouveau Jade gloss porcelain tiles, from £70.80 per sq m, Mandarin Stone. mandarinstone.com KBB



3



5



The adjoining master bedroom is similarly grand in style, so the spaces had to match.



left A large walk-in shower, featuring Drummonds' Classic wall-mounted shower arm and 30cm shower rose, adds to the feeling of luxury.

below Accessed through a secret wardrobe door from the bedroom, the space was to have an opulent feel.



A period-style WC adds personality to the space and fits with the Arts & Crafts era of the property.

