

# KITCHENS BEDROOMS & BATHROOMS

BRITAIN'S  
BEST-SELLING  
KITCHEN,  
BEDROOM AND  
BATHROOM  
MAGAZINE

JULY 2023  
£5.99

## AMAZING BATHROOMS

FROM GRAND  
MASTER SUITES TO  
SPECTACULAR  
FAMILY SPACES

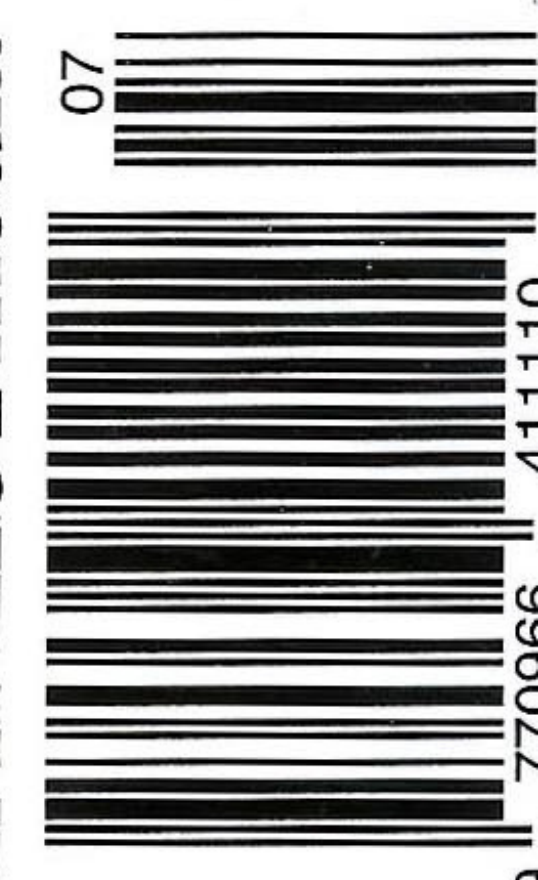
### INSIDE

- + How to design a bathroom like a pro
- + Bed buying made simple
- + The latest new launches and buys

*On the cover*

"A HOUSE IS ONLY A HOME IF IT REFLECTS YOUR PERSONALITY"

TAYLISTmedia



thesethreerooms.co





# How it's made

From sandcasting where the magic happens to handfinishing each piece, it takes several weeks and a lot of hard work to produce each of Drummond's unique designs



A love of metallurgy and metal casting led Robert Bak to his role of bath casting manager at Drummonds 18 years ago.



## How does your day start?

Work starts at 7am, so it's always an early one for me. I have four children and mornings are very busy.

## Once at work, what's the first thing you do?

As a manager, we have set weekly schedules and projects – but I always check all the machines at the casting plant when I arrive, before the working day starts. The casting process is complicated, and, as it involves melting iron at incredibly high temperatures, it can be dangerous. It's essential to monitor the machinery to ensure everyone is safe.

## What are your key responsibilities in your job?

Our products are handmade by expert craftsmen, making each bath unique. I am involved in all processes, from the casting (where the magic happens) to the enamelling. A big part of my job is to ensure quality: over the years, we have perfected

the process, and it's important to safeguard our production standards but also to keep raising the bar.

## How did you get your job?

My background was originally in mechanics and I have always been passionate about metallurgy, particularly the use of metals in casting and forming and how they respond in different circumstances. So, when Drummonds started the bath casting process here, I immediately knew I wanted to be part of it.

## What is the manufacturing process of the bathroom pieces like?

We have a small but efficient team of 15. Manufacturing our baths takes several weeks. We begin by sandcasting to form our tubs: a shape is made and encased in sand. The shape is then removed, leaving a cavity into which molten iron is poured by hand. After being left

to cool, the mould is broken open to reveal the casting inside, ready for hand finishing. Next, the interior is dry frit enamelled. Coat by coat, the enamel is sprinkled onto the inner surface of the bath and then baked at a high temperature. We repeat this up to five times to achieve the glossy, durable interior finish. The process is forming, casting, grinding, enamelling, finishing and packing.

## What are the challenges creating each design?

Iron's behaviour can change according to the weather. The amount of moisture in the room affects the casting, so we created a special spraying booth where moisture is sucked out of the air before we finish the baths.

## Is there a particular skill you're glad you possess?

Preparing the metal for casting. Although this may sound like a simple job, mixing and testing the correct elements requires skill and expertise. Every ingredient must be just right for the process to work. It can take months of training to reach an even a basic level of understanding.

## What is your proudest moment at work?

When you close the crate on a beautifully finished bath – that is always really rewarding.

## What impresses people the most when you tell them what you do?

Talking metallurgy is a niche interest, but when you start explaining the process to people, they become really fascinated. Especially when they see footage of how each piece is created. **KBB**





Placing art on the walls can really elevate your scheme, but is a finishing touch that can be overlooked when planning such a functional space.

Consider adding one or two prints that will help bring your overall look together. Wall paint in Paris Grey, £55.95 for 2.5 litres; Chalk Paint in Old Violet, from £7.95 for 120ml; Linen Union fabric in Antoinette and Old White, £39.95 per m, all Annie Sloan.

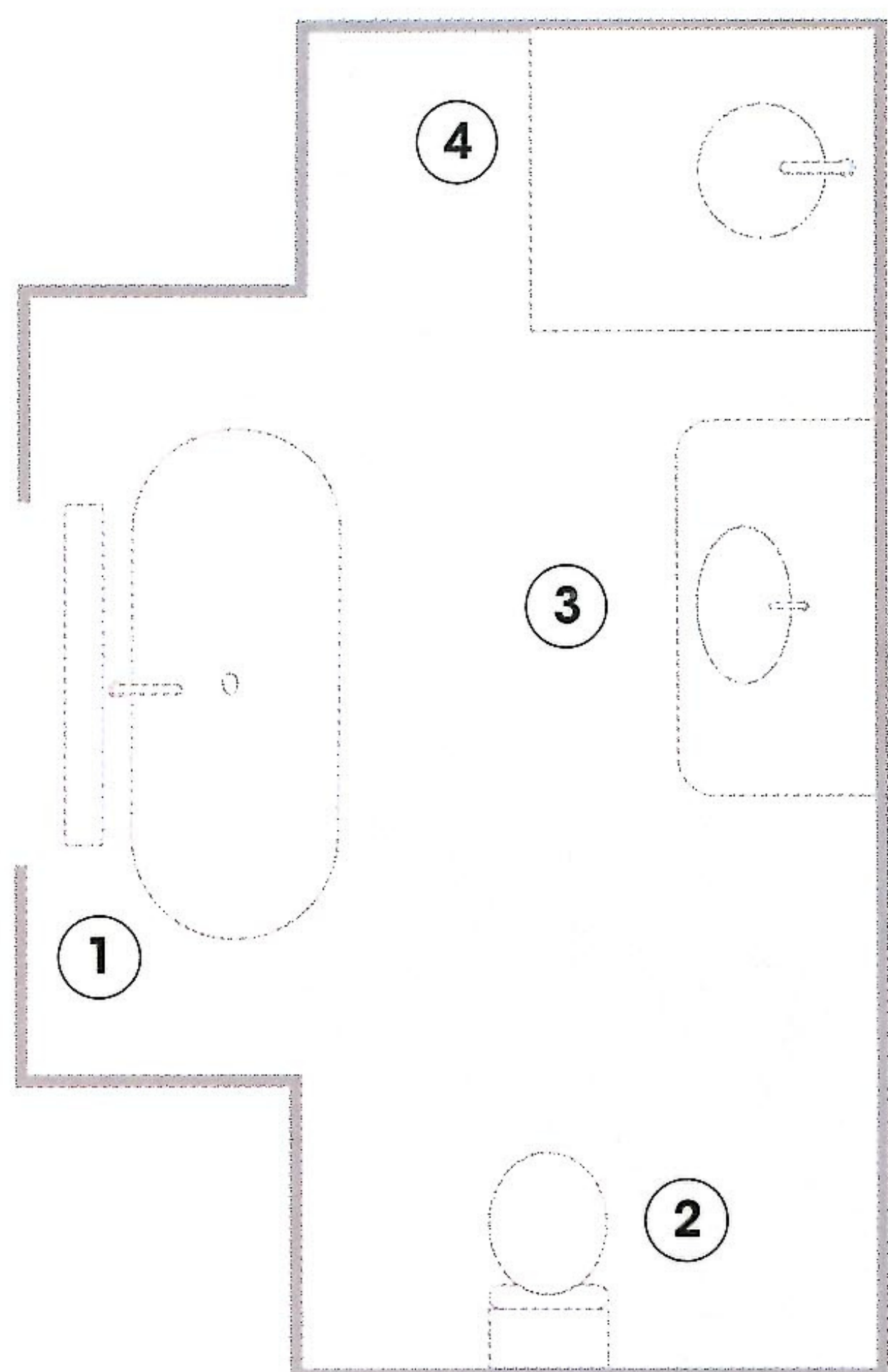


Day True designed this ensuite as an extension of the master bedroom. Wooden herringbone flooring runs throughout, creating a seamless link between both areas. A raised marble wet area distinguishes this zone, but the remaining design is luxurious with a soft palette.



Comfortable furniture can turn a bathing space into a dressing area. Shown with this upholstered seating area are the Tay bath with a painted finish, from £4770; Bestwood lever three-hole basin mixer, from £1536; three-bar wall-mounted towel rail, from £2670, all in Antique Bronze, from Drummonds.





## The PLANS

Keeping the existing vanity, Claire and Dominic stole floor area from the room to create a dedicated dressing space while revamping their ensuite.

**1 Bath** Situated under the wide sash window, this is the room's focal point.

**2 WC** For privacy, it has been tucked behind the entrance door.

**3 Vanity area** Placed opposite the window, the mirror above the basin reflects natural light, boosting the sense of space.

**4 Shower** The enclosure has been positioned to make the most of an alcove at one end of the room.



**left** The bath shower mixer, in Taunton finish with black ceramic lever handles, is from Lefroy Brooks.

**below** The WC, from Lefroy Brooks, has been tucked behind the door for privacy. Towel radiator, Bard & Brazier; mosaic flooring, Artisans of Dezives.



## SHOP THE LOOK

- 1** White 134 freestanding vanity, £3414, Burlington Bathrooms. [burlingtonbathrooms.com](http://burlingtonbathrooms.com)
- 2** Design Pattern D tile, £64.26 per sq m, The London Tile Co. [londontile.co.uk](http://londontile.co.uk)
- 3** Eicholtz Vivienne mirror, £760, Sweetpea & Willow. [sweetpeaandwillow.co.uk](http://sweetpeaandwillow.co.uk)
- 4** Mull Classic 3 hole basin mixer in antique bronze, from £1290, Drummonds. [drummonds-uk.com](http://drummonds-uk.com) KBB

