

COUNTRY LIFE

EVERY WEEK

SEPTEMBER 6, 2023

Time to fly:
our little
brown birds



Labour's vision for the countryside by Sir Keir Starmer
Chelsea Physic Garden and motoring on at Goodwood
Still in our hearts: remembering Elizabeth II

Soak in style

The latest fittings and furniture to add a touch of luxury to bath time, selected by Amelia Thorpe



◀ Mirror, mirror on the wall

Interior designer Suzy Hoodless has collaborated with Drummonds to create The Clarendon medicine-cabinet mirror, £2,196 in Antique Brass, shown here with a Double Lowther vanity in an Antique Bronze finish and Nero Portoro marble top, £17,352 (020-7376 4499; www.drummonds-uk.com)



▲ Two tone

Kobi Duck Egg Blue porcelain tiles, £55.20sq m, create a serene backdrop to a richly coloured Rojo Alicante marble vanity with impressive half moon-shaped splashback, from £438sq m, excluding fabrication, all Mandarin Stone (01600 715444; www.mandarinstone.com)

◀ Inspired by the past

Lapicida's new Majolica porcelain collection, £94.80sq m, can be mixed and matched to create a design inspired by vintage Majolica tiles from Southern Spain (01423 400100; www.lapicida.com) →



Pick of the crop Soap dishes



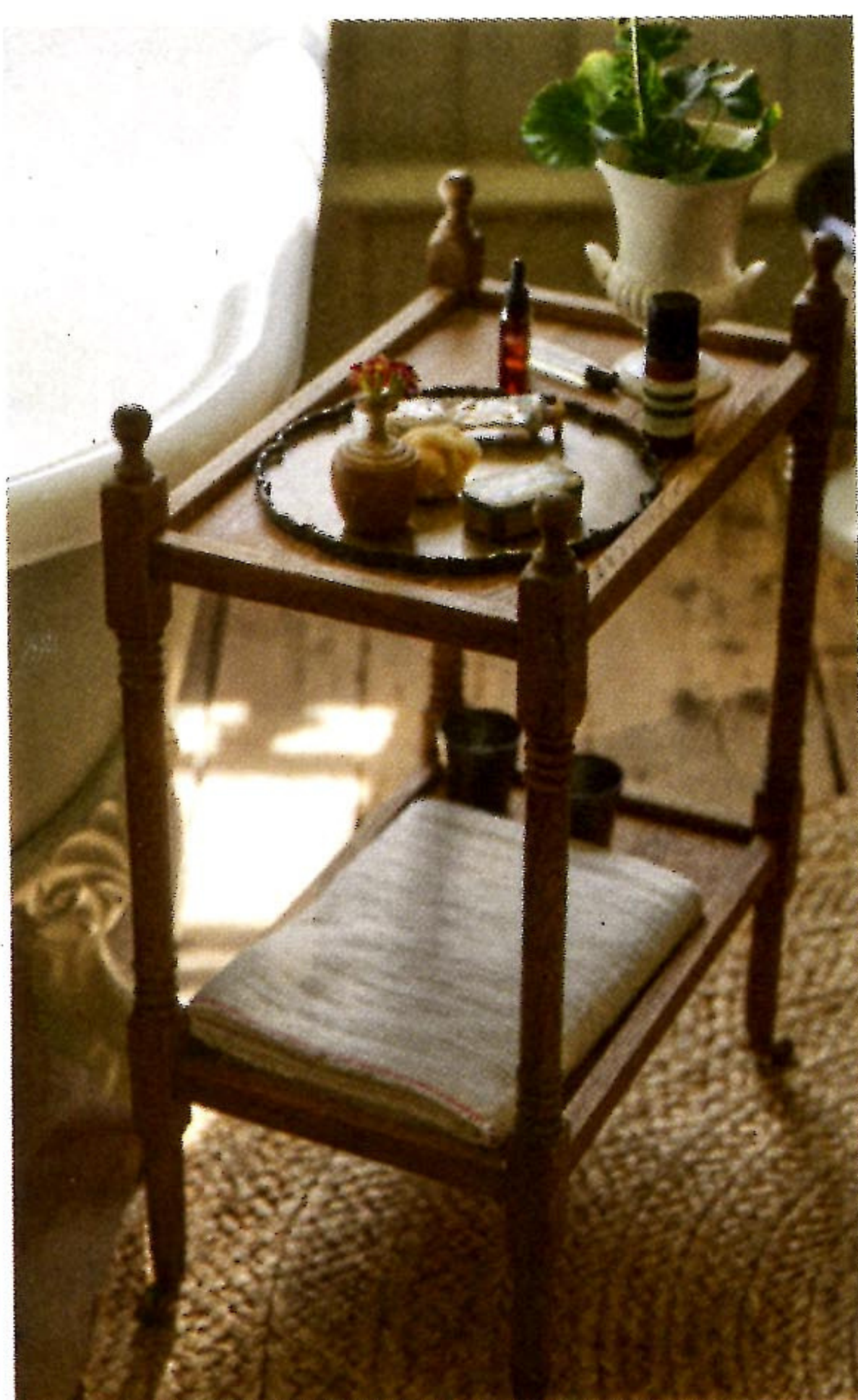
Arabescato marble soap dish, £114, Drummonds (020-7376 4499; www.drummonds-uk.com)



White Raised Dot soap dish, £12, Marquis & Dawe (01925 767611; www.marquisanddawe.co.uk)



Stratford Roll Top soap basket, in Antique Brass, £37.40, Jim Lawrence (01473 826685; www.jim-lawrence.co.uk)



◀ **Check it out**
Creamy Lansdown and dark Charlsworth English limestones have been combined to create a classic chequerboard floor, from £200sq m, Artorius Faber (01935 847333; www.artoriusfaber.com)

▼ **Earn your stripes**
Interior designer Lizzie Green chose handcrafted Zellige clay tiles, £137sq m, to create striking stripes in this shower-room design, from Mosaic Factory (020-3514 0483; www.mosaicfactory.com)



▲ **Making space**
Designed to maximise bathroom space, the Lussari tub, £3,350, has the look of a free-standing bath, yet fits snugly into a corner, from Victoria + Albert Baths (01952 221100; www.vandabaths.com)

◀ **Close at hand**
The Stanton Oak trolley, £449, is ideal for keeping lotions and potions within easy reach of the tub, from Rowen & Wren (01276 451077; www.rowenandwren.co.uk) →





◀ Refined elegance

'I love the challenge of making something ordinary into something intrinsically extraordinary,' says interior designer Alexandra Champalimaud of her Estrela brassware collection for THG Paris. Featuring fluted detailing and refined curves, basin mixer sets cost from £3,499 each (020-7838 7788; www.thg-paris.com)

▼ Vanity fair

Studio HÂM's collection of bathroom washstands and vanities include the Exe with a honed Carrara marble top and metal frame with lion-paw feet, £5,106 (01491 579371; www.studioham.co.uk)



◀ Traditional style

Lefroy Brooks's Ashcombe bath with raw cast-iron feet, £4,324, with Classic bath-shower mixer with standpipes in polished brass, £2,356, Charterhouse pedestal basin, £742 (01992 708316; <https://uk.lefroybrooks.com>)

► British brass

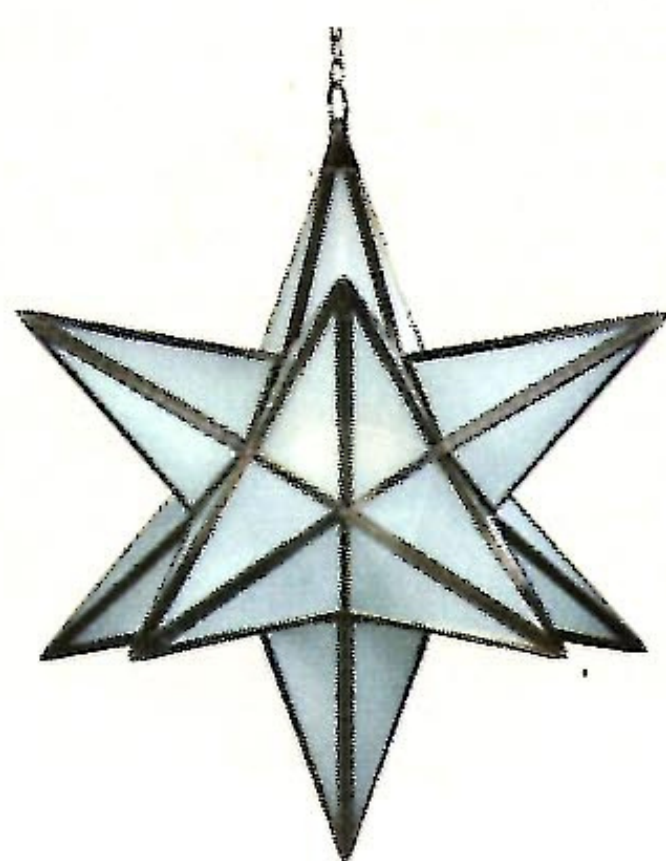
Armstrong shower set, £4,162, with Satin Brass finish and industrial styling, Perrin & Rowe (01708 526361; www.perrinandrowe.co.uk)



Pick of the crop Bathroom lights



Elbow IP44 wall fitting, £95, with 18cm Empire shade, £34, Pooky (020-7351 3003; www.pooky.com)



Star hanging lantern, from £2,556, Charles Edwards (020-7736 8490; www.charlesedwards.com)



The Clarendon wall light, £765, Drummonds x Suzy Hoodless (020-7376 4499; www.drummonds-uk.com)

