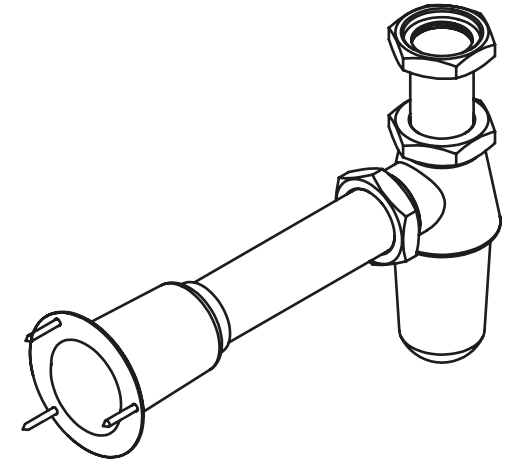
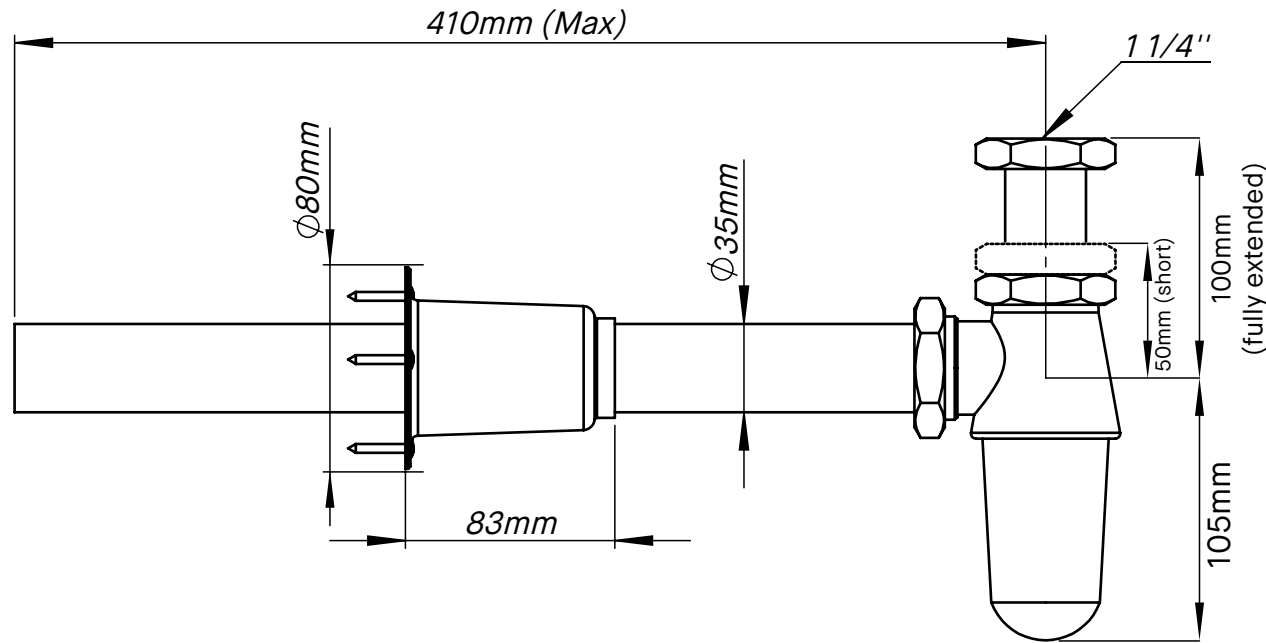
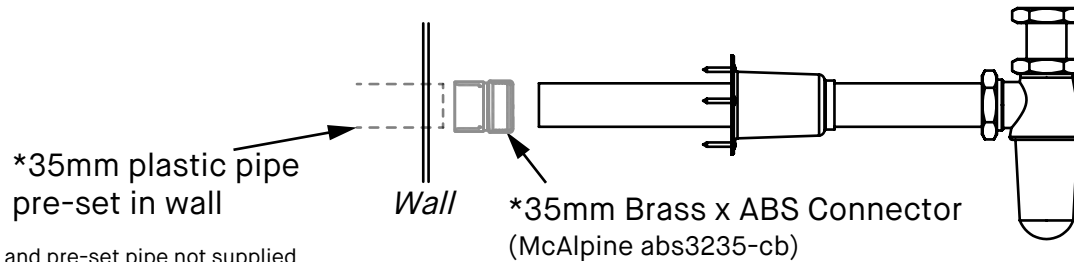


# DAD1226 Bottle Trap & Extended Wall Escutcheon

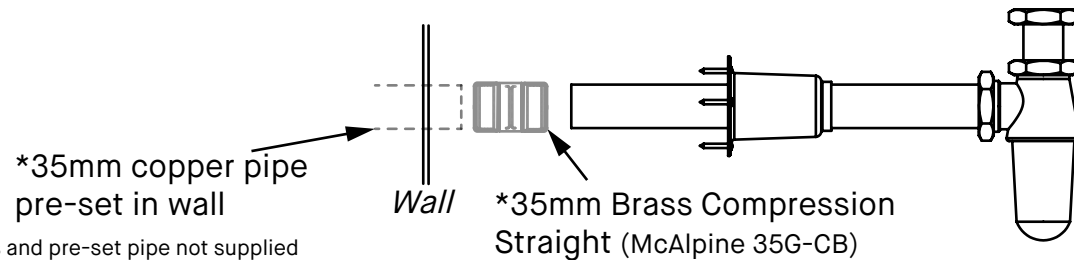


## Option 1:



\*Connections and pre-set pipe not supplied

## Option 2:



\*Connections and pre-set pipe not supplied

## Installation:

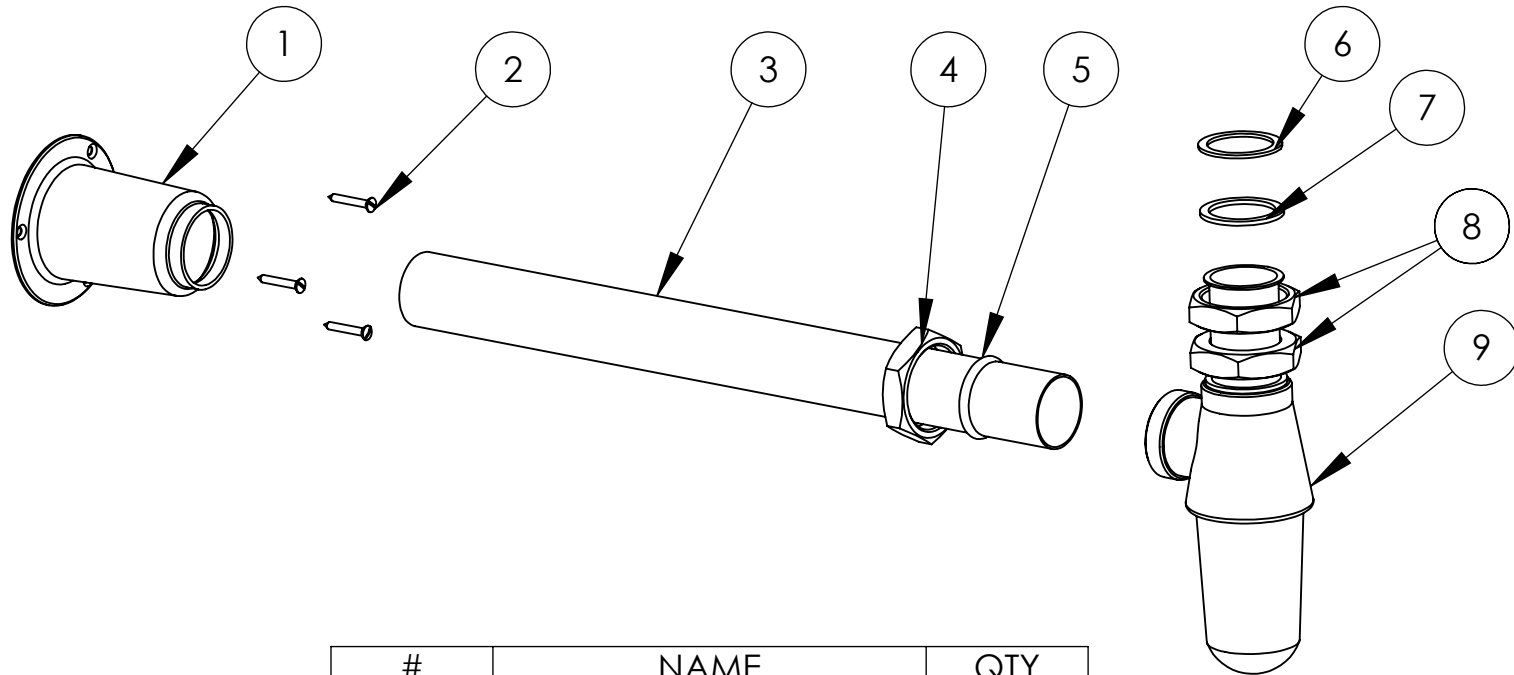
1. 35mm pipework preset in wall (not supplied)
2. Fix chosen connector to preset pipe (not supplied)
3. Insert 35mm brass pipe (3) into connector
4. Slide escutcheon (1) over the joint
5. Check length required and cut pipe (3) as required
6. Connect bottle trap and fix escutcheon (1) to wall

## Notes:

- Not compatible with plastic compression connectors
- When installing on a Naver Vanity Basin, bottle trap is required as first fix - please refer to the Naver Installation manual

 DRUMMONDS	<i>DAD1226</i>	<i>02</i>	<i>29/03/23</i>
	PRODUCT CODE	VERSION	DATE

# DAD1226 Bottle Trap & Extended Wall Escutcheon



#	NAME	QTY
1	Escutcheon	1
2	Screw 6x1	3
3	Pipe	1
4	Nut 1 1/4"	1
5	Rubber Seal	1
6	Fiber Washer	1
7	Rubber Washer	1
8	Nut	2
9	Bottle trap	1