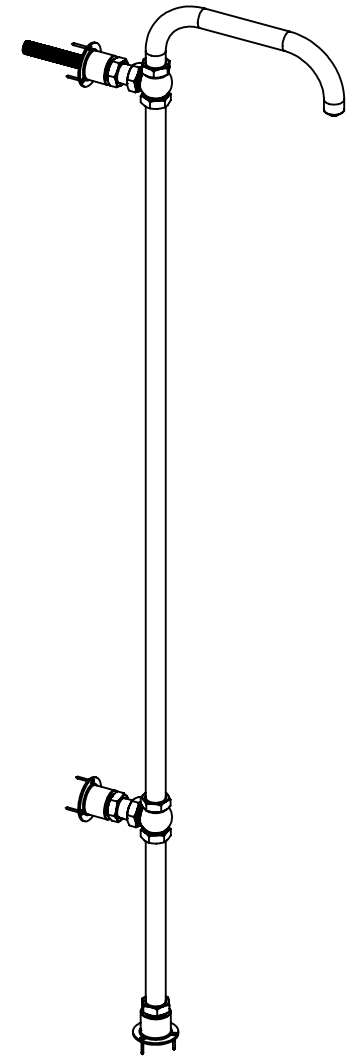
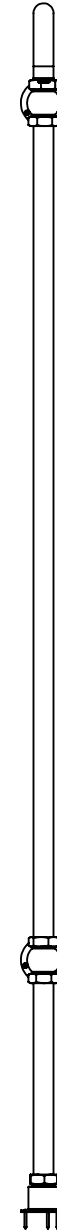
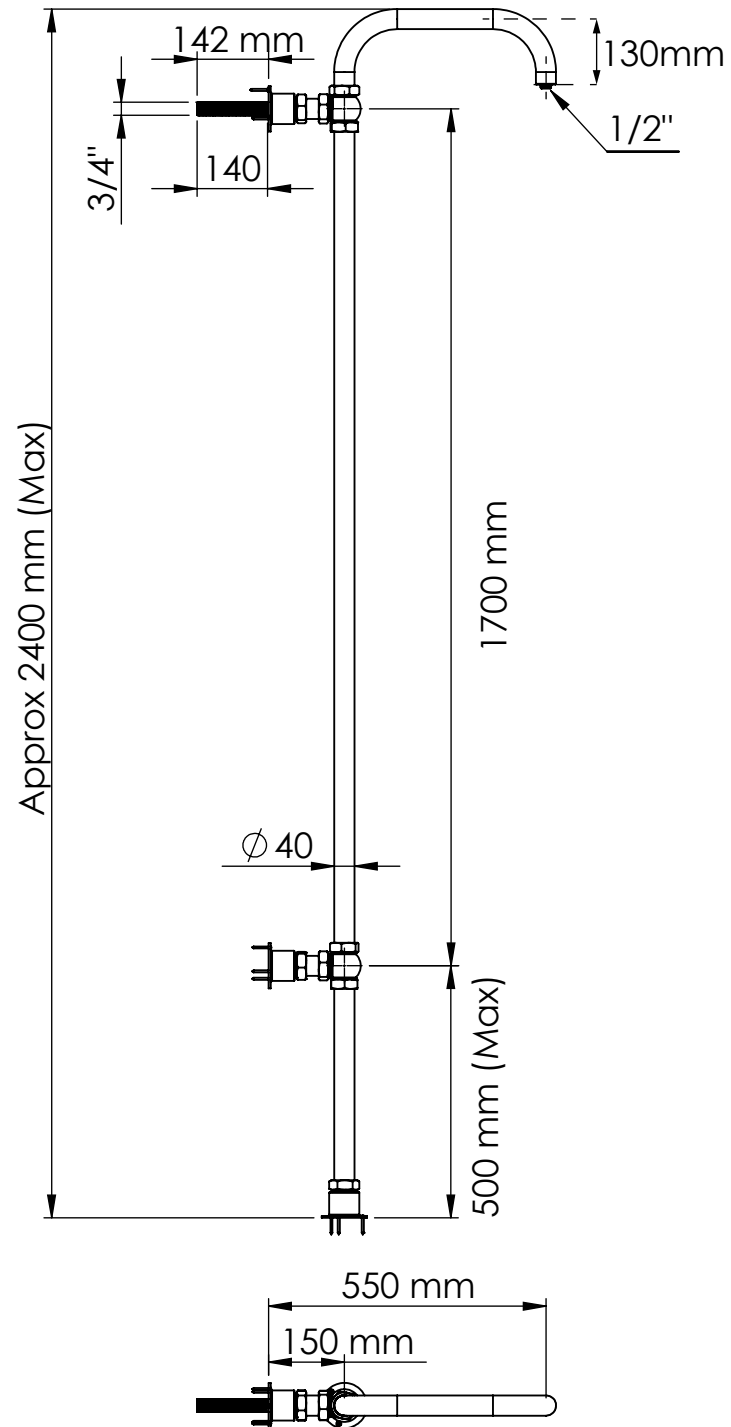

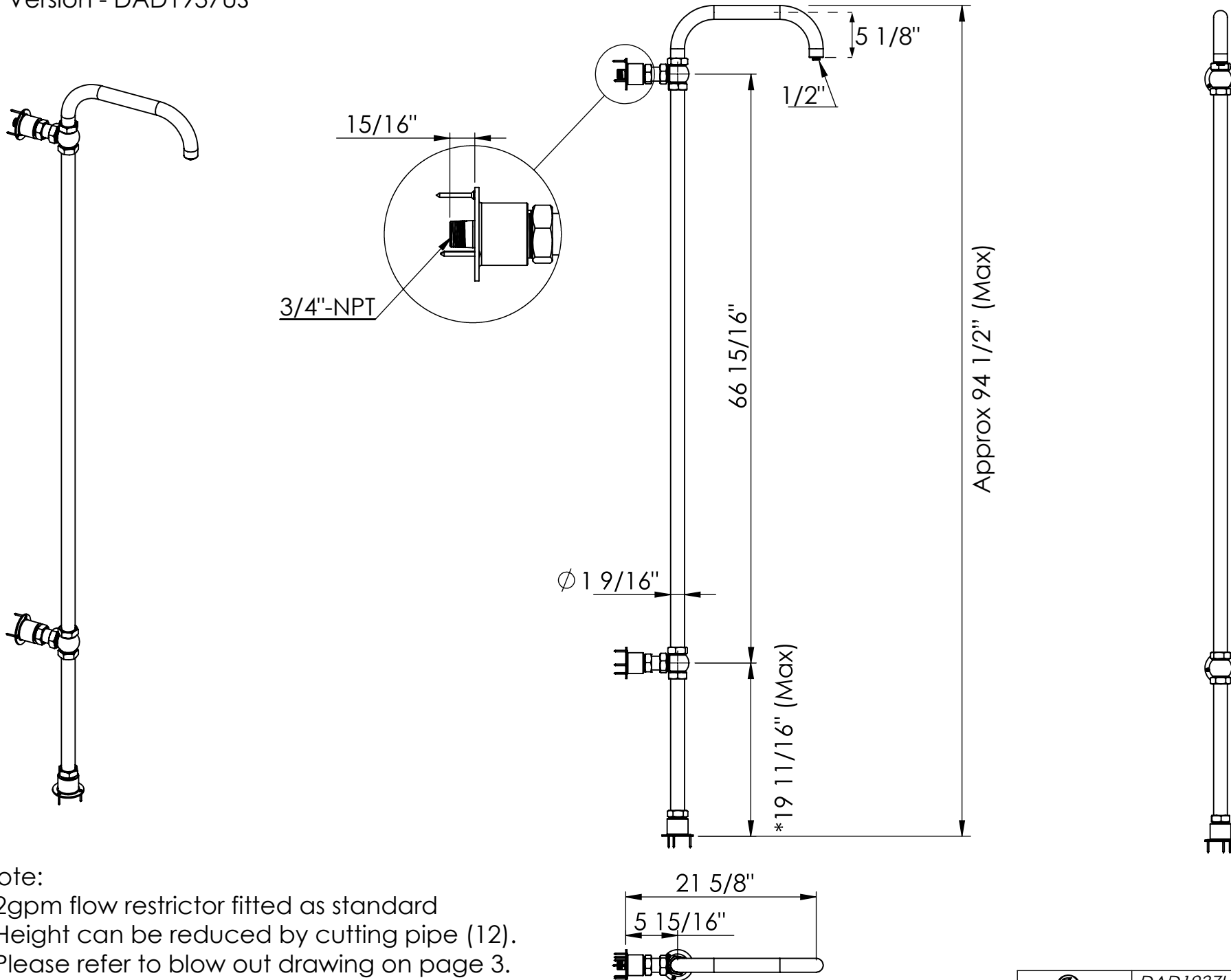


Standard Version - DAD1937

Note:
 - Height can be reduced
 by cutting pipe (12).
 Please refer to blow out
 drawing on page 3.

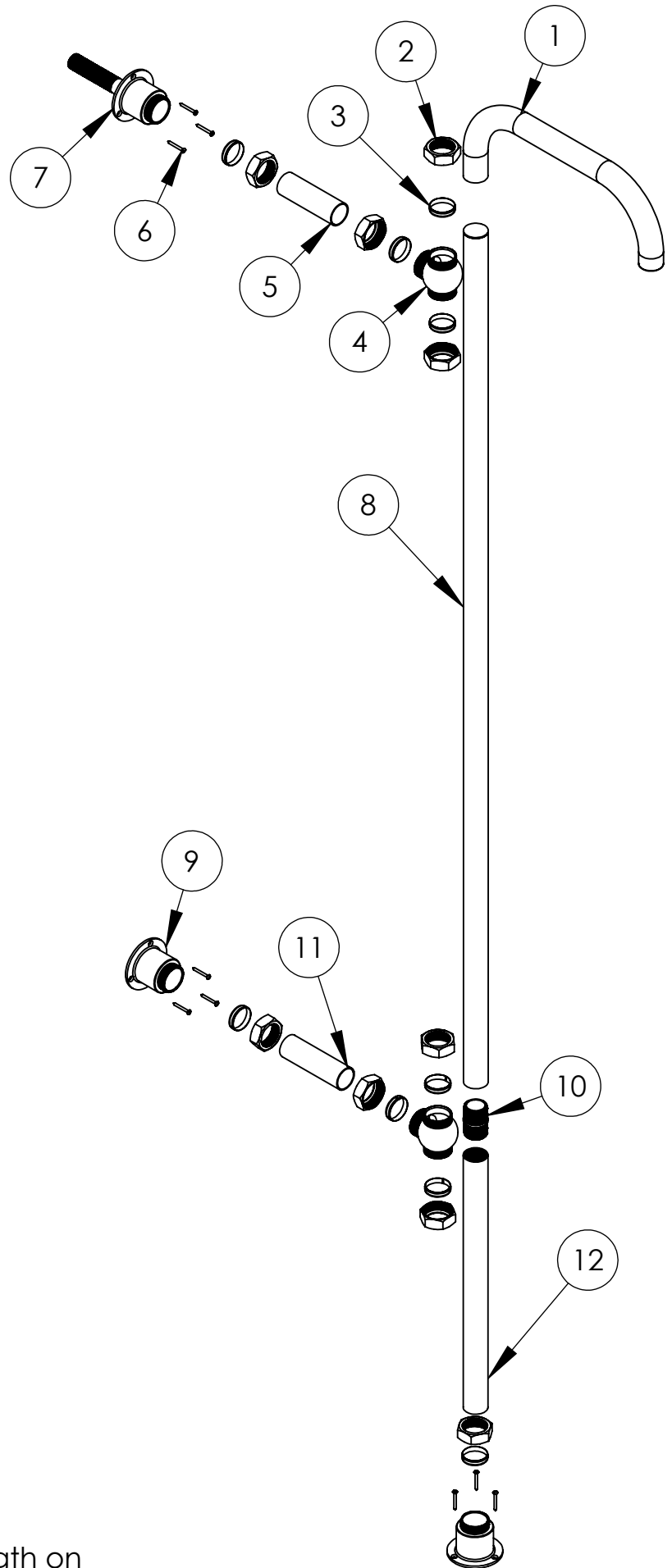


 DRUMMONDS	DAD1937	05	13.03.2020
	PRODUCT CODE	VERSION	DATE



Note:
 - 2gpm flow restrictor fitted as standard
 - Height can be reduced by cutting pipe (12).
 Please refer to blow out drawing on page 3.

 DRUMMONDS	DAD1937US	05	13.03.2020
	PRODUCT CODE	VERSION	DATE



#	NAME	QTY
1	Curved pipe	1
2	Nut	9
3	Olive	9
4	T-Piece	2
5	Horizontal supply pipe	1
6	Screw	9
7	Supply pipe	1
8	Pipe	1
9	Base	2
10	Pipe Connector	1
11	Horizontal Joint	1
12	Pipe	1

- Pipe (12) can be cut to required length on site. Please note that one end of this pipe is threaded and adjusting this pipe will also adjust the height of the wall fixings.