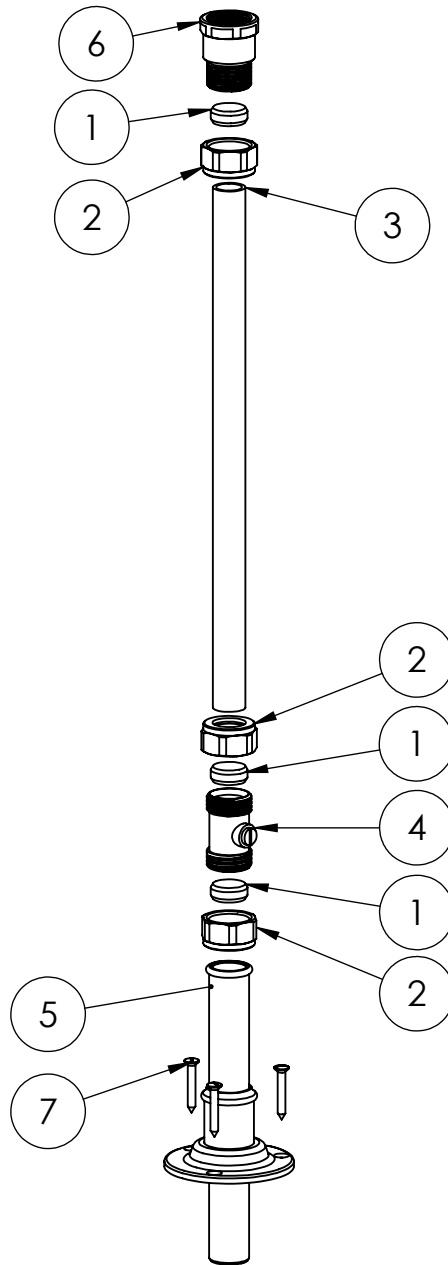


DAD3064 - Basin Pipework for Taps into Floor
Blow Out Drawing



Notes:

- Designed to work with Drummonds' Vanity Basins
- 15mm copper feed pipe required out of the floor (not supplied)

#	NAME	QTY	CODE
1	Olive ϕ 15mm	6	Part of DAF010 DAF005
2	Nut	6	
3	ϕ Pipe 15mm	2 x 1m	DAF023
4	15mm Ball-o-Fix Compression Straight	2	DAF010
5	Extendable Escutcheon	2	-
6	15mm x 1/2" Female Coupler	2	DAF005
7	Woodscrew 6x1"	6	DAF107