

BATHE IN LUXURY

A SOURCEBOOK OF BATHROOMS FROM THE FINEST HOMES AROUND THE WORLD



EDITED BY JAMES LENTAIGNE

BATHE IN LUXURY

A SOURCEBOOK OF BATHROOMS FROM THE FINEST HOMES AROUND THE WORLD

EDITED BY JAMES LENTAIGNE



DRUMMONDS

LONDON · NEW YORK



WELCOME

The bathroom is the most private room in the house; a space apart, yet deeply connected to the life that surrounds it. When designed with care, it speaks the same language as the rooms beyond while maintaining a distinct sense of calm and individuality.

One of the great pleasures of my work is seeing how skilfully designers achieve this balance. This book explores the bathroom in context, revealing how it both reflects and refines the character of the homes it belongs to.

James



CONTENTS

THE TOWNHOUSE 6
THE COUNTRY HOUSE 36
THE CASTLE 88
THE COAST 118
SURFACE STATEMENTS 156
INDEX 218

INTERVIEWS

WIGGY HINDMARCH 12
NAOMI ASTLEY CLARKE 18
SANDRA CHOI 50
BEATA HEUMAN 62
MARTIN BRUDNIZKI 74
LORD SHAFTESBURY 90
MARC NEWSON 158
KATIE GROVE 162
STEVEN GAMBREL 168
NICOLA HARDING 192



THE TOWNHOUSE

The townhouse remains one of the most versatile forms of urban living; from grand Georgian terraces with sweeping staircases to the clean geometry of mid-century architecture. However diverse their façades, most share one defining characteristic: space is at a premium, and every inch must work hard. Nowhere is this truer than in the bathroom.

In the townhouse, design becomes a study in proportion and intent. Rooms are often compact, yet demand a sense of refinement equal to the grander spaces beyond. To my mind, the first true bathrooms arrived in a flurry in Victorian London, when the advent of citywide water infrastructure in the 1870s saw the capital's wealthiest homes convert their smallest bedroom to a bathroom. These new rooms were tiled and fitted with cast-iron baths; a quiet revolution in comfort and privacy that changed domestic life forever.

Today's townhouse bathrooms continue that lineage of ingenuity. They are places where design and discipline meet; where scale, symmetry and storage are treated as luxuries in themselves. We see bathrooms that borrow light from stairwells, that align with dressing rooms and bedrooms in a seamless flow of materials and palette. In these homes, architecture and ritual converge: the bathroom is both retreat and continuation, reflecting the order, elegance and clarity that define the townhouse itself.



GREENWICH TOWNHOUSE, NEW YORK

A classic brownstone designed for a theatre producer and arts patron; luxury paired with the bohemian spirit of the West Village. Designed by Studio Shamshiri.



The Spittal Freestanding Shower





RIVERSIDE QUEEN ANNE HOUSE,
WEST LONDON
Designed by Wiggly Hindmarch

"I cannot live without a bath, even if it's boiling hot in the middle of summer. It's an important ritual. Every bathroom has dimmable lights, a beautiful scented candle and a selection of lovely bath potions. I find pharmacies in Austria, Germany and Switzerland have the best selections. The combination of lighting and aromatherapy can completely lift your mood."

Overlooking the River Thames in west London, designer of fashion brand Wiggly Kit, **Wiggly Hindmarch's** tall Queen Anne house is a picture of elegant proportion and ease. Behind its grand façade, the rooms follow a graceful, shallow footprint - only one room deep - so that light pours in from both directions: the river to the south and a generous garden to the north. The result is a house filled with sunshine, reflection and air.

In the principal bathroom, Martin Lawrence Bullard's Turquerie fabric, sourced through Tissus d'Hélène, forms a decorative backdrop to a scheme that feels at once worldly and serene. Rattan lanterns, Soane Britain mirrors and a bespoke vanity by Nicholas Walton Design bring a tailored informality to the space.

Having lived in the Bahamas and the United States, Hindmarch brought a distinctly transatlantic sensibility to her English home. There is a breezy, coastal quality to the interiors, particularly evident in her daughter's bedrooms on the upper floors with fresh blues, whites and natural textures that feels both refined and relaxed. Once a jumble of shared spaces, the top floor has been cleverly reconfigured to give each bedroom an ensuite. Evoking the rhythm of an American beach house, tongue-and-groove panelling, striped curtains and bamboo accents reinforce this quietly nautical spirit. Aged brassware gives a depth and warmth to the space.

"I like seeing age and evidence of use; the fact that real human beings have touched things," Hindmarch says. "It's not a home if everything looks brand new. That's one of the reasons I chose unlacquered finishes on the brassware. Seeing the watermarks and patina, seeing it tarnish; that for me is the beauty."



The Bourne Vanity Basin
The Mull Collection





MODERN EDWARDIAN TOWNHOUSE, LONDON
This six-bedroom West London townhouse was redesigned into a vibrant family home, tailored to meet the needs and reflect the personalities of a busy family with three young children. Designed by Naomi Astley Clarke.





Designer **Naomi Astley Clarke** explains the vision behind this six-bedroom West London townhouse transformation.

The brief was to create a warm, vibrant and playful family home - one that met every practical need while reflecting the personalities of a busy household with three young children. The main living areas were to feel welcoming and sociable, while the bedrooms and bathrooms offered calm, restorative spaces.

"The principal bathroom was designed as a sanctuary - a place for my clients to retreat from the energy of family life," says Naomi. *"It features a beautiful steam room lined in marble and a roll-top bathtub as its centrepiece. The double basin is both practical and sculptural, with discreet storage built into bespoke joinery to maintain a sense of order and calm. Muted greys and soft blues set the tone for quiet luxury."*

Chosen for their classic beauty and enduring quality, Drummonds' fittings were specified throughout all four bathrooms and the ground-floor cloakroom. In the principal ensuite, the polished Meon Bathtub and Double Ladybower Vanity Basin with Calacatta



marble take centre stage, the whole space defined by understated elegance and a cool, composed palette.

Adjoining the ensuite, a bespoke dressing room continues the soft, neutral scheme, its floor-to-ceiling cupboards accented by warm brass handles for a subtle touch of glamour.

More expressive in character, the downstairs shower room is swathed in geometric tiles from Lapidica and finished with gleaming brass fixtures, including the Grand Floorstanding Shower with a Ceramic Tear Drop Shower Rose. Dramatic and decorative, it was designed to make a bold impression.

"Down in the basement, I wanted to create something with a Manhattan sensibility," Naomi adds. *"It's a naturally darker space, so rather than fight that, I leaned into it - using tiles, brass details, and even a neon tick on the wall alongside a guitar. It feels intimate, atmospheric and real."*

The Bourne Vanity Basin
The Mull Collection
The Round Tilt Mirror
The Ceramic Tear Drop Shower Rose
Grand Floorstanding Shower & Handset
The Leawood Collection
The Rother WC Suite





The Meon Bathtub
The Bestwood Collection
The Single Dalby Light
The Double Ladybower Vanity Basin



VICTORIAN TOWNHOUSE, LONDON
 This interior has been modernised to introduce fresh colours, updated materials and a lighter spatial flow, all while preserving the townhouse's classic proportions and architectural character. Designed by Orla Read Design.

The Swale Bathtub
 The Mull Collection
 The Dalby Shower



19TH-CENTURY TOWNHOUSE, LONDON

A traditional interior transformed to evoke a sleek, hotel-style
ambiance with a Deco-era New York influence. Designed by
Anouska Tamony Interiors.

The Dalby Shower
The Coll Collection
The Single Ladybower Vanity Stand



The Dalby Shower
The Shamrock Shower Rose
The Ashburn Bathtub
The Mull Collection

RESTORED MEWS HOUSE, LONDON
A glass roof floods the space with natural light and provides views of the expansive London plane tree in the garden.
Designed by Alison Henry Design.



DIDSBURY TOWNHOUSE, MANCHESTER
A large family home fully renovated to create a refined atmosphere inspired by luxury hotels. Designed by Artisan Interiors.



The Coll Collection
The Bute Bathtub
The Eden WC Suite



MODERN COUNTRY BATHROOM, COTSWOLDS
A contemporary take on rural charm, combining natural materials and classic detailing to create a space that feels both refined and inviting. Designed by Nicola Harding & Co.

The Double Tow Vanity Basin
The Bestwood X Collection
Heated Towel Rail
The Eden WC Suite
Grand Floorstanding Shower & Handset



GEORGIAN TOWNHOUSE, LONDON

This four-bedroom townhouse underwent a full renovation, blending classic sophistication with masculine industrial flair and retro-inspired design elements.

The Single Locky Vanity Basin
The Chessleton Collection



THE COUNTRY HOUSE

In the rural estate or manor house, the bathroom claims a rare generosity of space. Most of these buildings - farmhouses, cottages, manors - pre-date the Victorian bathroom revolution and have been converted from old bedrooms, attics or outbuildings. With wide-sashed windows, high ceilings and views over garden or woodland, the rooms carry a sense of calm, fresh air and silence broken only by birdsong.

Here the bathroom is more than a utility; it is a retreat. The surrounding house itself is a place of refuge and renewal, set amongst landscape, and the bathroom becomes its most intimate expression. Sanitary plumbing only reached many country houses in the early twentieth-century, and many of these beautiful buildings weren't considered desirable until the last 50 years. In my opinion, this makes bathroom conversions all the more successful. We've learned to celebrate and preserve the spirit of a building - however rough around the edges - and pair it with modern plumbing and contemporary ritual.

In this setting, design can feel liberal and unhurried, yet it must still speak to the architecture of the house and connect subtly to the adjoining rooms. A well-designed country-house bathroom honours the light, the view, the materials and the sense of place. It may borrow from the dressing room or corridor but retains its own character; serene, layered, quietly luxurious. In these homes, the bathroom is never an afterthought: it takes pride of place.



TYES PLACE, MID SUSSEX

This nineteenth-century grain store has been reimagined as a secluded countryside guest house while preserving its rustic, timber-framed character. Designed by Perilla Edwards.



The Tamar Bathtub
The Mull Collection
The Arrow Dispenser
The Colvin Bath Rack



The Syre Vanity Basin
The Tamar Bathtub
The Mull Collection



KATE MOSS' COUNTRY HOUSE, COTSWOLDS
 A charming country retreat, the principal bathroom features a range of classic pieces from Drummonds with personal mementous from the owner's career.

Heated Towel Rail
 The Mull Collection
 The Double Lowther Vanity Basin



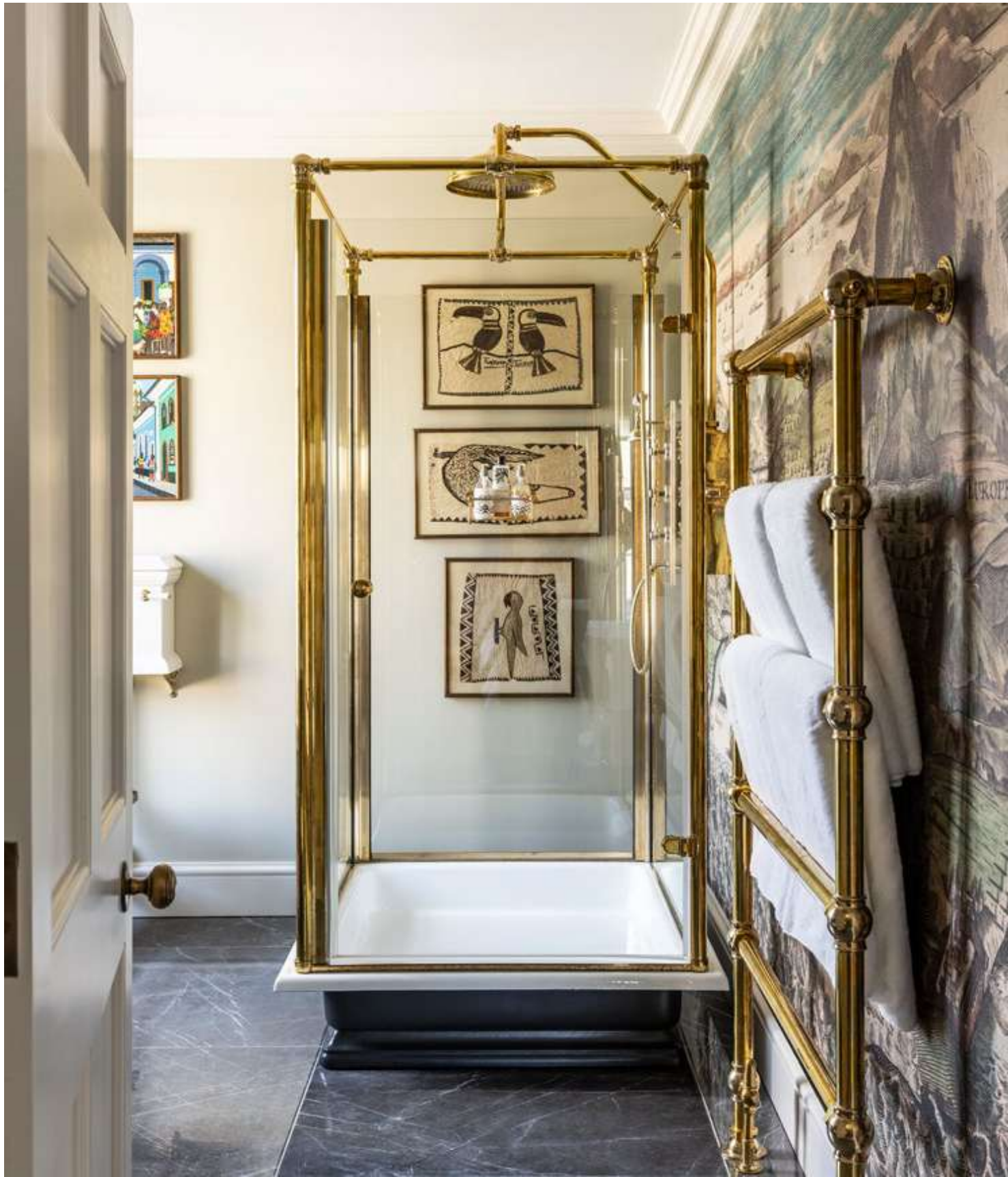


COUNTRY VILLA, WEST SUSSEX

This renovated country villa features Drummonds' bathroomware in all seven of its bathrooms, reflecting a quintessential British style.

The Avon Bathtub
The Mull Collection
The Eden WC Suite
The Single Thames Vanity Basin





The Thurso Freestanding Shower
Heated Towel Rail
The Usk Bathtub
The Mull Collection







COTSWOLDS RETREAT
Designed by Sandra Choi, Creative Director of Jimmy Choo

Sandra Choi, Creative Director of Jimmy Choo, and her husband Tam have created a retreat for their family in the Cotswolds; a sanctuary tucked high at the top of a secluded valley, with sweeping views and a vast garden that feels both cultivated and wild. It's a place designed for rest, reflection and the slow rhythm of country life.

Spread over sixty-five acres of steep, undulating land, the estate stretches down towards a bubbling brook that feeds from the nearby River Avon. Terraces lead through old orchards, wildflower meadows and ancient woodland, with spaces for entertaining, quiet contemplation and growing food for the kitchen. Against this backdrop, the house stands as a calm counterpoint - a restorative refuge surrounded by nature.

"Design, for me, has to have a narrative to it," Sandra explains, *"but it also needs a purpose; it needs a function. An interior is a bit like designing a shoe - once you have a base structure, you can add and change everything around it."*

Her interiors reflect this philosophy: tactile, layered and deeply personal. *"A home for me is to escape, and mine is in*

the middle of nowhere. There needs to be warmth and it needs to be quite personal, to switch on all your senses. What this space gives me is neutrality, but packed with richness. Every colour plays off another, and texture is where the warmth lies."

Collected objects gathered over two decades lend a lived-in charm - *"an eclectic mix of warmth,"* Sandra says, *"that becomes the fabric of the house."*

And at the heart of her retreat? *"Hot water, good linen, nice towels and a great bath. Everything about a bathroom is important to life; a good bath - or even just being in that room - revitalises you."*





WOODLAND HOUSE, SURREY HILLS
 A 1920s home pared back to its essential architecture, revealing clean lines, natural materials and a quietly ordered layout, framed by sweeping views across the English countryside. Designed by Alexandra Young.



The Usk Bathtub
The Coll Collection
Heated Towel Rail



GRADE II LISTED FARMHOUSE, SUFFOLK

Originally three farmers cottages from the 1530s, this family home has hallmarks of each century from Elizabethan hearths and beams to Victorian brickwork and 1930s leaded windows.

The Tay Bathtub
The Coll Collection
The Single Locky Vanity Basin



The Single Windermere Vanity Basin
 The Mull Collection
 The Coll Collection
 The Brora WC Suite
 The Islay Bidet



18TH-CENTURY FARMHOUSE,
 SWEDEN
 Designed by Beata Heuman



Beata Heuman returned to familiar ground when an eighteenth-century house became available on her parents' farm in southern Sweden, offering her a way to reclaim part of her own story. She had grown up on this land - a patchwork of fields, streams and red-roofed barns - and returned years later, now an interior designer, to create a holiday retreat for her young family.

The house, one of two built beside the estate's nineteenth-century manor, is understated and perfectly proportioned with low-beamed ceilings and an orderly row of windows. Inside, the rooms align around a square axis, offering elegant sight lines from one space to the next. When the first-floor ceilings proved too low, Beata moved their bedroom downstairs and transformed the adjoining study into a bathroom; a light-filled corner room that has become a quiet heart of the house.

The door to the bathroom is often left open so its soft light spills through the home. This inspired Beata to use her own Florentine Flowers wallpaper, its repeating Giglio motif recalling the hand-painted walls of Florence. "Although the design may appear uniform at first

glance," she explains, "there are in fact three variations of the hand-drawn motif, subtle shifts that reveal themselves to a watchful eye."

A late eighteenth-century fragment from a panoramic wallpaper showing a Nepalese scene hangs above the door, while a plaster medallion by sculptor Johan Tobias Sergel honours the writer Martina von Schwerin, who once lived on the estate. Beata's father and the farm carpenter crafted the towel rail, completing the room's sense of continuity and care.

"Your home needs to be a fold for your past, present and future; it should be a combination of all the things that make you," says Beata. "People are a mix of many things - old and new, high and low - and I think we're happiest in rooms that reflect that."



QUEEN ANNE REVIVAL, OREGON

This home has been thoughtfully reworked to highlight its period architecture, from original mouldings and timberwork to restored proportions and a considered spatial flow. Designed by Jessica Helgeson Interior Design.

The Mull Collection
The Single Windermere Vanity Basin





The Mull Collection
The Single Buttermere Vanity Basin



THIEVES HOLLOW, CHESHIRE

This home, originally built in the 1920s by W. Worthington in the Arts & Crafts tradition, has been carefully restored with a focus on proportion, material integrity and contemporary comfort. Designed by Studio Havn.



The Spey Bathtub
The Coll Collection
Heated Towel Rail

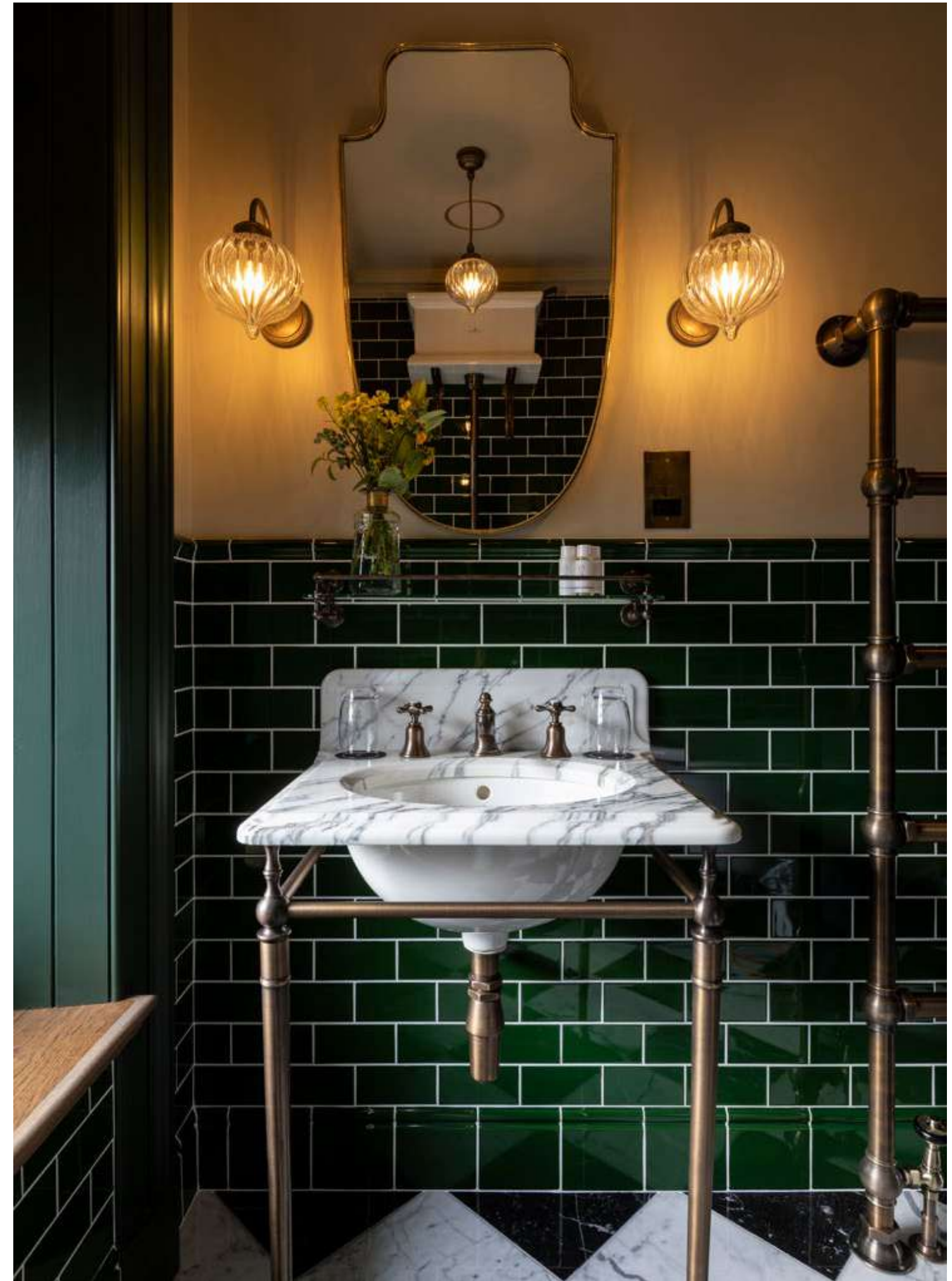


The Single Thames Vanity Basin
The Mull Collection





KILDRUMMY INN, SCOTLAND
Established in 1828, this family-run inn offers four luxury bedrooms for a secluded stay in the Aberdeenshire countryside. Designed by Joelle Reid Interiors.



The Lea Vanity Basin
The Mull Collection
Heated Towel Rail



The Syre Vanity Basin
The Bestwood X Collection



BINDERTON HOUSE, CHICHESTER
Designed by Martin Brudnizki

"This is a fantasy of English Arcadian life by a Swede who didn't grow up in houses like this." Martin Brudnizki

Dating back to the seventeenth-century and once home to former Prime Minister Anthony Eden, Binderton House in Chichester has a long and distinguished history. The core of the house is a handsome two-storey building from 1677, its pedimented stone porch flanked by wings of differing lengths added in the eighteenth-century. Now converted into apartments, **Martin Brudnizki** and his partner Jonathan Brook now occupy the ground floor of the oldest and grandest section; a two-bedroom home that includes the original drawing room. Increasingly, the pair spend more time here than in London, drawn to the serenity of the countryside and the house's quiet grandeur.

In true Brudnizki style, the interiors are a celebration of pattern, colour and comfort. Billowing fabrics, ruffled lampshades and lavish textures create a mood that is both nostalgic and exuberant.

While the design honours the house's Georgian proportions, it departs from

formality, re-imagining English country style with a sense of fantasy and humour.

That sensibility is distilled in the principal bathroom. The walls and chequerboard floor - in white Arabescato and yellow Siena marble - form a luminous backdrop for the Avon cast-iron, skirted bathtub, painted candy pink, and the Double Ladybower Vanity Basin with marble top, both from Drummonds. Lights from Visual Comfort & Co, a blind in Braquenié's Zelina silk in Pétale, and a vintage slipper chair upholstered in Jean Monro's Autumn Roses complete the tableau.

Elegant yet joyous, the room captures the designer's signature blend of heritage and imagination - a bathroom that feels as storied as the house itself.



The Avon Bathtub
The Leewood Collection
The Double Ladybower Vanity Basin



19TH CENTURY FARMHOUSE, COTSWOLDS

This project transformed a farmhouse, two stable block cottages, and a Dutch barn into a single dwelling, featuring a wine tasting room, cinema, gym, spa, and a swimming pool that converts into a dance floor. Designed by Sophie Head Interiors.

The Tay Bathtub
The Coll Collection





OLD MILL HOUSE, STIRLINGSHIRE
 This former 200-year-old carding and spinning mill has been sensitively restored to its historic character, with original stonework and timber structure carefully preserved throughout. Designed by Lee Collins of Braco Designs.



The Meon Bathtub
 The Leawood Collection
 The Coll Collection







JORDAN VINEYARD & WINERY, CALIFORNIA
Founded in 1972, the winery recently completed an eight-month renovation. Its luxury guest suites blend traditional French style with modern touches. Designed by Maria Haidamus Interiors.



The Leawood Collection



LAKESIDE RETREAT, NEW HAMPSHIRE
 This wood-shingle and fieldstone home has been designed to sit naturally within its lakeside setting, with a layout and material palette shaped by the surrounding landscape. Designed by Nina Farmer Interiors in collaboration with Charles R. Myer & Partners.

The Swale Bathtub
 The Leawood Collection



THE CASTLE

A handful of grand houses - from storied estates to historic castles - form this chapter; a collection that stands apart from the gentler welcome of farmhouses and cottages.

These are buildings conceived to impress and entertain, designed at a scale that makes the stomach flip as the house emerges at the end of its winding drive.

In such spaces, the challenge of creating a bathroom is one of balance and restraint. Converting a former bedchamber or tower room may involve twenty-foot ceilings, stone fireplaces, deep casement windows or intricate oak panelling. The bathroom tile would, in most instances, be an act of vandalism here. Instead, the approach must be architectural; freestanding baths, showers and towel rails positioned at the room's centre, leaving the historic fabric untouched.

It is in settings like these that Drummonds first founded its place in the British interior with fittings able to speak to the history and architecture of even a castle, their scale and form answering the weight and rhythm of the room.

Here, the sense of theatre and ceremony that once defined great houses finds a natural counterpart. The bathroom becomes both stage and sanctuary, a place of grandeur and ritual, where history and modern comfort meet without compromise.



ST GILES HOUSE, DORSET

A seventeenth-century Grade I country house on the Shaftesbury estate, sensitively restored to create a timeless and deeply atmospheric family retreat.



"You can't let houses like this just fall apart. When it fell to me to restore it, I developed a real love for the building and saw the magic in the rooms as they were. We left the panelling on the walls and put back all the pictures. You have different layers of history going on; a quality in the house already that was quite precious. We couldn't have created it."

Nicholas Ashley-Cooper
Earl of Shaftesbury

Built in 1651, St Giles House in Dorset is one of Britain's great architectural treasures. Home to the Earls of Shaftesbury for nearly four-centuries, the house had fallen into disrepair when Nicholas Ashley-Cooper inherited it in 2005. What followed was less a restoration than a revival - a process rooted in empathy rather than perfection.

"You have to listen to a house like this," he explains. "When we've bought things new, we've always tried to make them harmonious with the house and the history. That doesn't always mean traditional, but it's got to sit right - they need to be there to last."

The results speak quietly. Original panelling, reinstated pictures and worn

stone floors coexist with carefully considered modern interventions.

The bathrooms, conceived as rooms in their own right, reflect the same dialogue between past and present. In the principal suite, the Usk roll-top bath finished in bespoke copper sits beneath high sash windows - a sculptural counterpoint to the age-softened plaster walls. A freestanding Spittal shower and Lowther vanity in black Marquina marble continue the theme of solidity and grace.

Across the seventeenth-century stables, now transformed into guest bedrooms, similar principles apply. Antique brass showers and cast-iron baths stand alongside contemporary detailing, each piece chosen for longevity and harmony rather than display.

At St Giles House, restoration has become a philosophy: a measured conversation between centuries, ensuring that what endures feels entirely natural to its time.

The Wye Bathtub
The Mull Collection
The Brora WC Suite



The Severn Freestanding Shower
The Spey Bathtub
The Mull Collection

The Spittal Freestanding Shower
The Syre Vanity Basin
The Wye Bathtub
The Mull Collection





ALDOURIE CASTLE, SCOTLAND

A 300-year-old baronial castle set on the banks of Loch Ness; reimagined to create a one-of-a-kind private retreat. Designed by Jamb.



The Mull Collection
Original antique bath





The Naver Vanity Basin
The Mull Collection



The Double Lowther Vanity Basin
The Single Lowther Vanity Basin
The Mull Collection



LA MAISON NORMANDE, DOMAINE DE BAILLEUL
NORMANDY, FRANCE
The characterful outbuilding of this sixteenth-century chateau
has been lovingly restored by its owner.



The Double Tav Vanity Basin
The Mull Collection
The Baby Ness Bathtub





BALLYFIN DEMESNE, IRELAND

A meticulously restored 1820s neoclassical estate set within 614 acres of parkland, celebrated for its period architecture and craftsmanship.









VEN HOUSE, SOMERSET

This historic country house features grand, period interiors with highly decorative styling in each room. Designed by Studio Indigo.



The Usk Bathtub
The Mull Collection
The Double Lowther Vanity Basin
Heated Towel Rail



The Severn Freestanding Shower



THE COAST

As this book took shape, a chapter on coastal bathrooms emerged almost of its own accord; unexpected but somehow inevitable. The coastline has always drawn those seeking renewal; if one has the means to build a home that enriches daily life, the sea is a natural muse.

What has struck me most in compiling this chapter is the extraordinary range of interpretations. From Mediterranean palazzi to Caribbean beach houses, from villas in Santa Monica to Japanese container homes balanced above the tide, each speaks in its own architectural dialect. Yet a single thread runs through them all: the rooms are built around a vision of the coastline and its extraordinary light.

Coastal bathrooms invite the landscape in. They are rooms shaped by salt air and horizon, by reflection and rhythm. Surfaces are often pale, tactile and weathered, echoing driftwood, sand and stone. Materials must withstand the elements yet feel serene to the touch; design here is about resilience and repose in equal measure.

Above all, these rooms embody openness. They borrow from the colours of the sea and the calm it brings, turning bathing into an act of contemplation. Whether high above a rocky shore or steps from the beach, the coastal bathroom blurs the boundary between inside and out, a sanctuary where the horizon itself becomes part of the architecture.



PRIVATE RETREAT, CARIBBEAN COAST
This modern villa was inspired by the secluded luxury of a James Bond location. Designed by Barlow & Barlow Design.



The Spey Bathtub
The Mull Collection



Classic Wall Mounted Shower Arm
The Serpentine Bathtub
The Chessleton Collection





The Dalby Shower
The Double Locky Vanity Basin
The Coll Collection



PRIVATE VILLA, SOUTHERN SPAIN

Seven bedrooms, each with a private ensuite, form a calm retreat shaped by views of the sea and the surrounding Mediterranean landscape.



The Ness Bathtub
The Bestwood Collection
The Brora WC Suite





The Single Locky Vanity Basin
The Mull Collection
The Rectangular Tilt Mirror
The Tay Bathtub
The Chessleton Collection



ART NOUVEAU BUILDING, MALTA

Originally built in 1928, the Balluta apartment blocks in St Julian's Bay were restored to their original Art Nouveau style with added contemporary elements. Designed by Rebirth Design Studio.



The Humber Bathtub
The Coll Collection
Heated Towel Rail



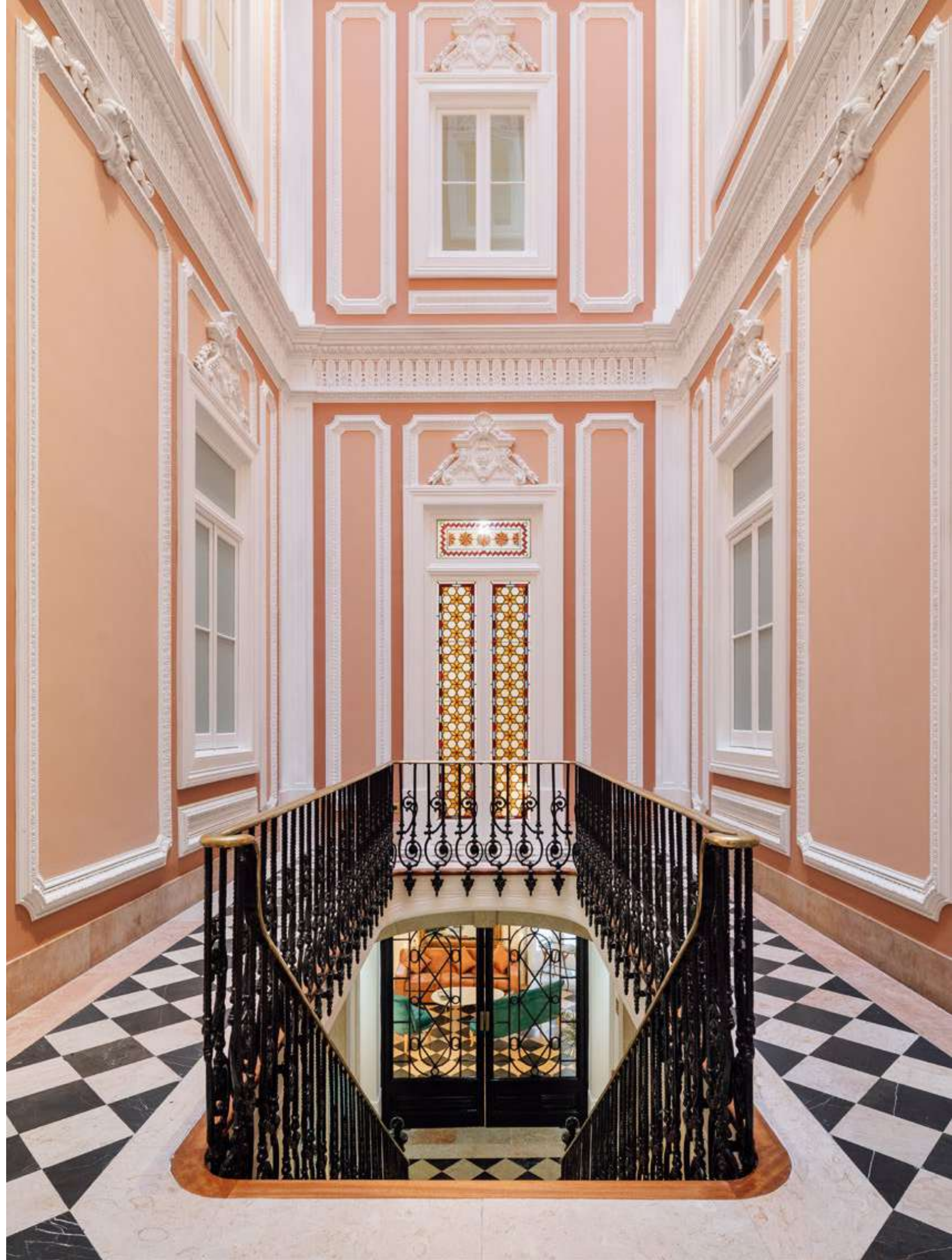
Heated Towel Rail
The Chessleton Collection
The Single Ladybower Vanity Basin
The Rother WC Suite
Grand Floorstanding Shower & Handset



PALACIO PRINCIPE REAL, LISBON

Once a family home known for its lavish society parties, this nineteenth-century palacete has been transformed into a hotel blending historical luxury with modern comfort.

The Tay Bathtub
The Mull Collection





The Morar Bathtub
The Mull Collection



GREG NORMAN'S JUPITER ISLAND HOME, FLORIDA
This eight-acre private estate spans from the Intracoastal Waterway to the Atlantic Ocean and includes seven buildings, with interiors inspired by luxury yacht design. Designed by Kirsten Norman.



The Thurso Freestanding Shower
The Kinloch Vanity Basin
The Leawood Collection
The Double Derwent Light
The Round Tilt Mirror



CONTAINER HOUSE, OSAKA

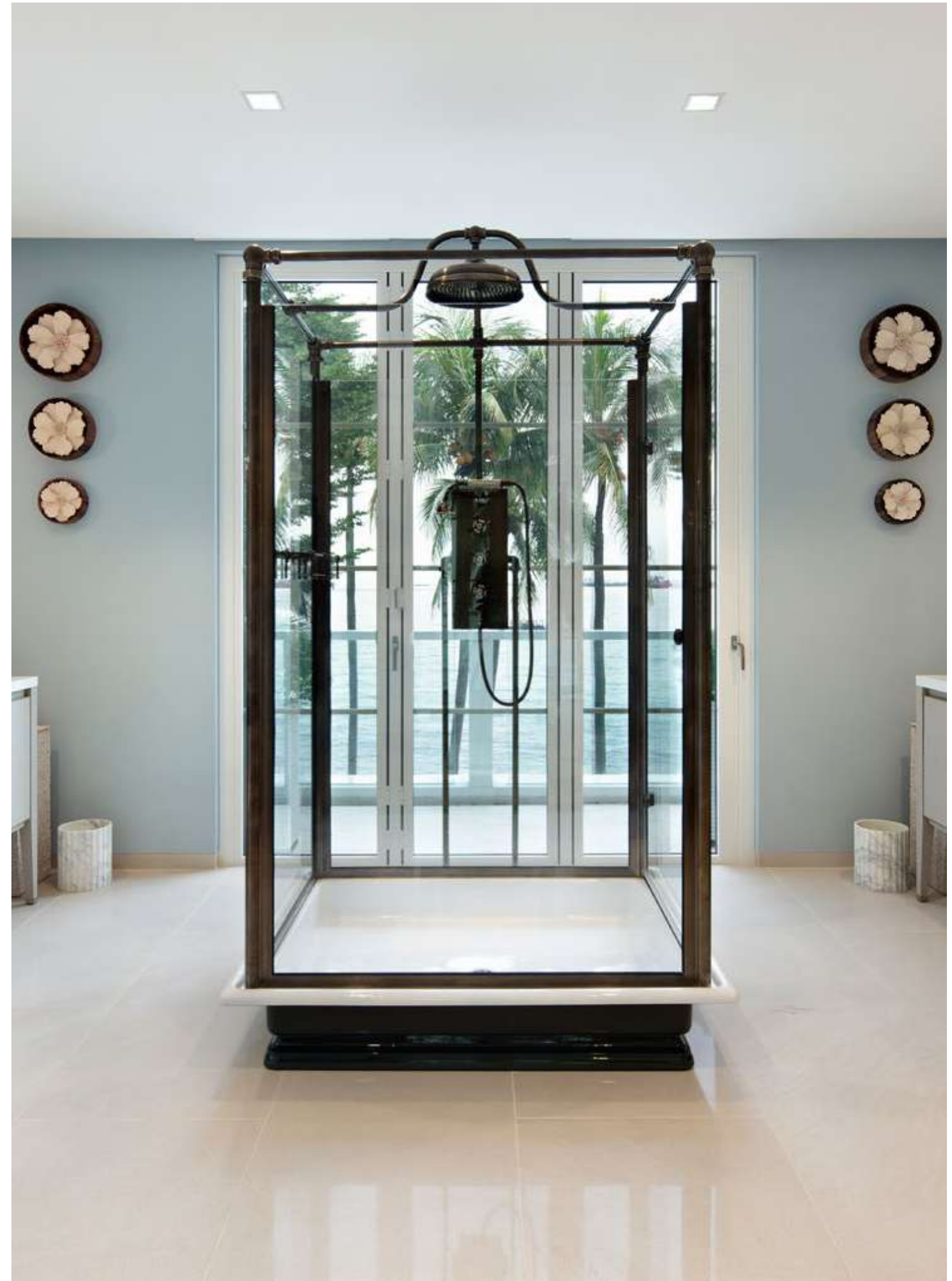
This home was conceived as a coastal stronghold, constructed from sixteen interlocked shipping containers to withstand the climate and frame far-reaching ocean views on Kouri Island in Okinawa. Designed by Tomoaki Koga.

The Mull Collection
The Spey Bathtub





HAMPTONS-STYLE BEACH HOUSE, SINGAPORE
This coastal property combines soothing colours and warm metal finishes to create a welcoming atmosphere. Designed by Artalenta.



The Thurso Freestanding Shower



SANTA MONICA VILLA, CALIFORNIA

This hillside home near Malibu has been meticulously restored to emphasise its clean lines, natural materials and a seamless indoor-outdoor flow, with each room oriented toward panoramic views of the Pacific Ocean.



The Chessleton Collection
The Dalby Shower

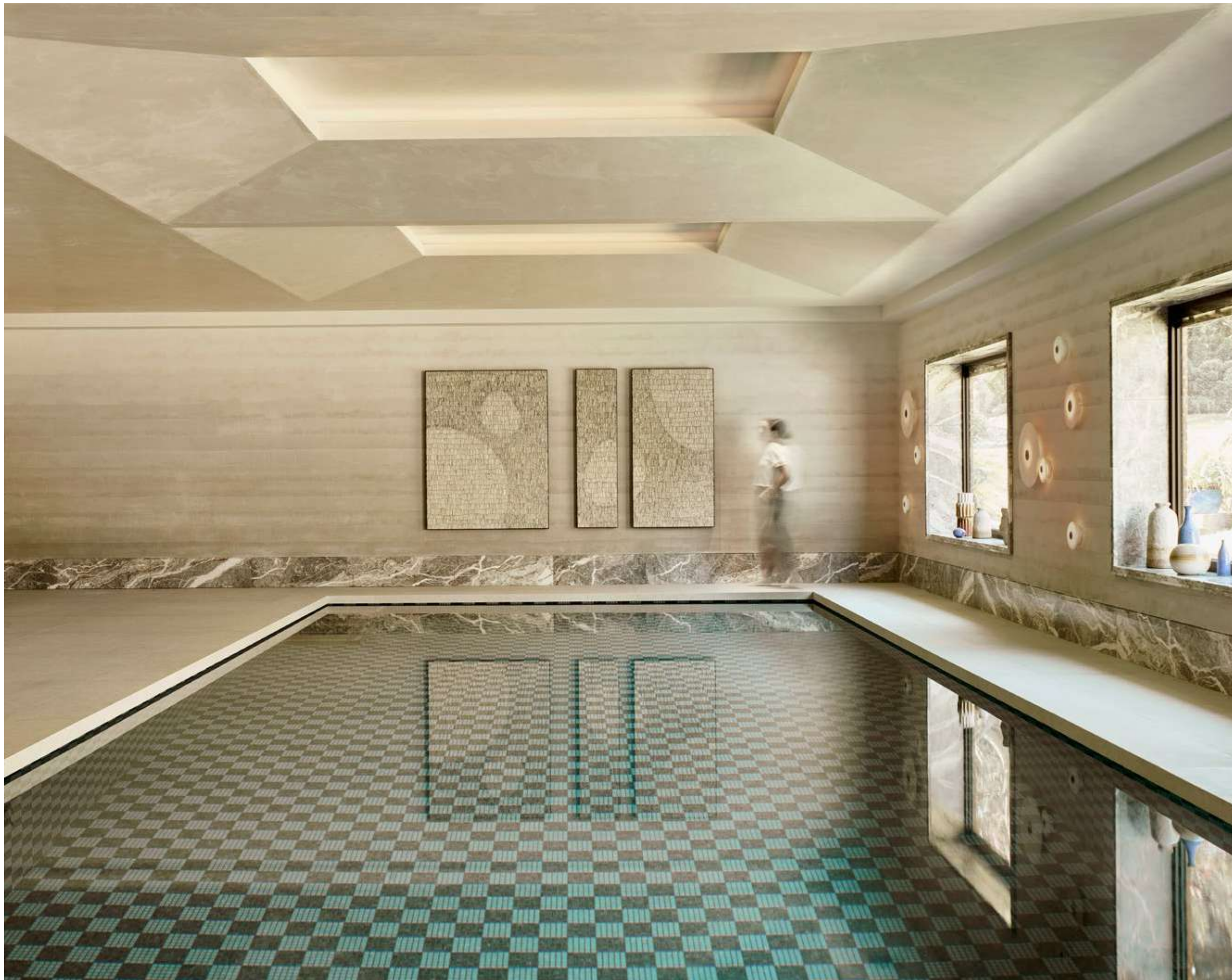




ROYAL PALM RESIDENCES, THE SEYCHELLES
This contemporary Palladian retreat features high-ceilinged rooms and a refined, symmetrical layout that opens to sweeping views of white sand and the turquoise Indian Ocean. Designed by Leila Corbett.

The Tay Bathtub





SURFACE STATEMENTS

Some rooms are defined not by their setting but by their surfaces. Whether in a townhouse, cottage or castle, these are spaces where material takes the lead and becomes the story. Here, the designer's hand is bold: surface becomes structure, decoration becomes architecture.

Nowhere is this more striking than in stone-clad bathrooms. When walls and floors are enveloped in marble or limestone and the material assumes a monumental quality, reflecting light and sound to create an atmosphere of calm solemnity that feels almost devotional. These rooms invite ritual; they slow the pace and command respect for self-care.

Elsewhere, surface expression takes more playful forms. In generously proportioned, well-ventilated bathrooms, wallpaper has re-emerged with surprising success; its energy and colour creating a richer dialogue with the surrounding rooms. Bold paint treatments similarly have the power to reshape a space, enhancing - and sometimes entirely transcending - the architecture beneath.

What unites these projects is a sense of conviction. They are rooms where personality and material speak first, perhaps not in rebellion but in renewal. The bathroom can, when done well, speak clearly and beautifully in its own voice.



JACOBAN HOUSE, COTSWOLDS
Designed by Marc Newson

"I work on a really broad range of different kinds of products - everything from the aviation and nautical industries to automotive - but really specialising in product design and furniture. You name it... chances are I've probably tried to design it." Marc Newson

In a house in the Cotswolds, designer **Marc Newson** has created a bathroom of extraordinary calm and precision. The space forms part of his personal retreat and showcases his Bibury Collection for Drummonds, yet its impact lies as much in its architecture and material as in the pieces themselves.

The main bathroom is large and light-filled, overlooking the gardens. Painted a soft blue grey, the room's generous proportions - high ceilings, stone-framed windows and an open fireplace - are balanced by the sculptural simplicity of the Coln bath, positioned to take in the view. Around it, the mirror cabinet, towel rails and shelving are carved from pure white Thassos marble, creating a dialogue of tone and geometry. The effect is one of quiet symmetry and permanence.

Through a discreet doorway lies the

adjoining shower room - a seamless volume clad entirely in Striato Olimpico marble. Its continuous veining flows uninterrupted from wall to floor and around each recess, creating a sense of enveloping stillness. The marble's soft white base and grey striations suggest movement and order, as if the room itself were carved from a single block of stone.

"With Drummonds," Newson notes, *"I thought it would be really fun to design products that felt both modern and traditional - the tap is reminiscent of an old industrial valve handle. Incredibly well made, and the kind of thing you can install once and never worry about again."*

Pared-back yet monumental, the rooms embody Newson's design philosophy: timeless function expressed through perfect form, where every surface contributes to a deeper sense of balance and serenity.



The Coln Bathtub
The Bibury Collection
Classic Ceiling Shower Arm





*“I love that a friend can perch on the edge of the bath.
These rooms are made to be lived in.”*

Katie Grove, Interior designer to Kate Moss

KATE MOSS'S TOWNHOUSE, LONDON
Designed by Katie Grove

Behind a discreet red-brick façade in central London lies Kate Moss's newly reimagined home: a four-storey 1930s townhouse set within a conservation area. Inside, designer Katie Grove has created a world of measured glamour and warmth, drawing inspiration from Villa Necchi Campiglio in Milan and its serene 1930s elegance.

The principal bathroom is a private sanctuary at the heart of this transformation. Rosa Portugal marble blushes across walls and floor, the soft veining rippling in scalloped contours that seem almost to move in the light. The stone's gentle hue sets a romantic, cocoon-like tone, enveloping the space in calm. Minimal book-matching allows the natural variation of the marble to take centre stage, lending depth and authenticity.

Within this architecture of stone, Drummonds' fittings bring balance and soul. A bespoke roll-top bath anchors the room, paired with Mull taps set neatly into a carved niche within the demi-wall. Chosen in unlacquered brass, the metal's living finish will mellow over time, its patina softening beautifully against the pink marble. *“I love the way it*

ages each piece differently,” says Grove, *“like old rambling houses in the English countryside.”*

The vanity, lined in pale pink ripple sycamore by David Haddock, establishes both rhythm and intimacy; its carved petal motifs reference Saxon churches and Japanese tokonoma alcoves. Light, handled with restraint, emanates from concealed sources, while a single stone wall light by Brightbox casts a subtle glow.

Every surface, seam and junction has been resolved with purpose. The result is a bathroom that feels timeless yet personal - a space for ritual, ease and conversation - a room, as Moss herself might say, *“made to be lived in.”*

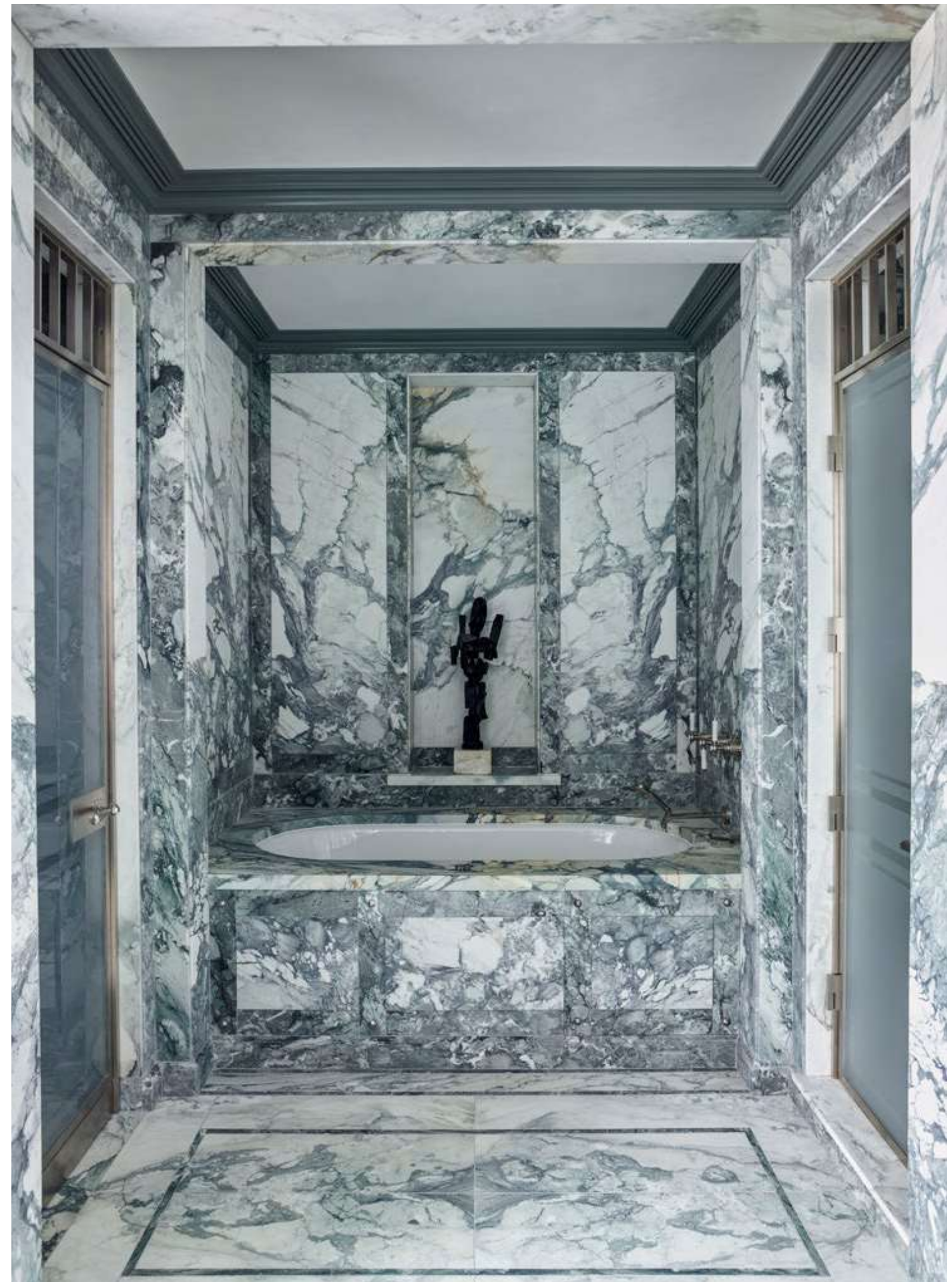


The Mull Collection
Bespoke over-mounted bath
Classic Shower Rose & Hand Shower
Heated Towel Rail





TOWNHOUSE, CHICAGO
Lined with Breccia Capraia marble, this striking bathroom is one of several stand-out spaces in a luxurious apartment.
Designed by Steven Gambrel.



The Chessleton Collection
The Baby Ness Bathtub



MAYFAIR TOWNHOUSE, LONDON

Inspired by lobby interiors of mid twentieth-century London, the principal bathroom of this Mayfair apartment showcases an intoxicating mix of warm materials, colours and textures. Designed by Steven Gambrel.



"One of the things that I really like is to celebrate the slab, the stone, the finish of the wall, the cleanness of that. I don't necessarily want to penetrate that with a niche; what I would rather have is hardware - something substantial and architectural that matches the scale and weight of the stone." Steven Gambrel

In the principal bathroom of a Mayfair apartment, **Steven Gambrel** has composed a study in proportion, material and quiet drama. Inspired by the refined lobby interiors of mid twentieth-century London, the space combines modern geometry with a nostalgic sense of permanence.

The architecture is defined by stone: Verde Luana and Verde St Denis marbles wrap the room in deep greens and shifting veining. Their rich tonal variation sets a mood of calm opulence, both decorative and structural. Gambrel's approach celebrates the integrity of these slabs - their polish, grain and depth - treating the stone as architecture rather than ornament.

Against this backdrop, Drummonds' antique brass fittings provide the necessary counterpoint: substantial,

weighty and tactile. "If I have big, heavy doors and hardware that is strong and architectural in the house, I want that in the bathroom as well," Gambrel explains. "When I first discovered Drummonds, what appealed to me was the thickness of the metalwork - the gauge is different."

Within the sculptural shower enclosure, twin floorstanding shower arms rise like columns, each crowned with a 300mm shower rose. The Chesseleton brassware, with its elegant china handles and classic detailing, reinforces the room's sense of scale and longevity. The bespoke vanity, framed in brass and topped with the same swirling marble, continues this dialogue of material and form.

Gambrel describes the finished space as "a found relic that you would never consider removing" - a bathroom that feels anchored in its setting, designed not for fashion but for permanence.

The Coll Collection
The Chesseleton Collection





The Chessleton Collection
Grand Floorstanding Shower & Handset
The Coll Collection



CLASSIC GEORGIAN HOUSE, TORONTO
Built in 1925, this house features classic Georgian architecture with balanced proportions, double-hung windows, crown mouldings, and draws inspiration from Ballyfin Castle in Ireland.



The Morar Bathtub
The Coll Collection
The Dalby Shower
The Shamrock Shower Rose

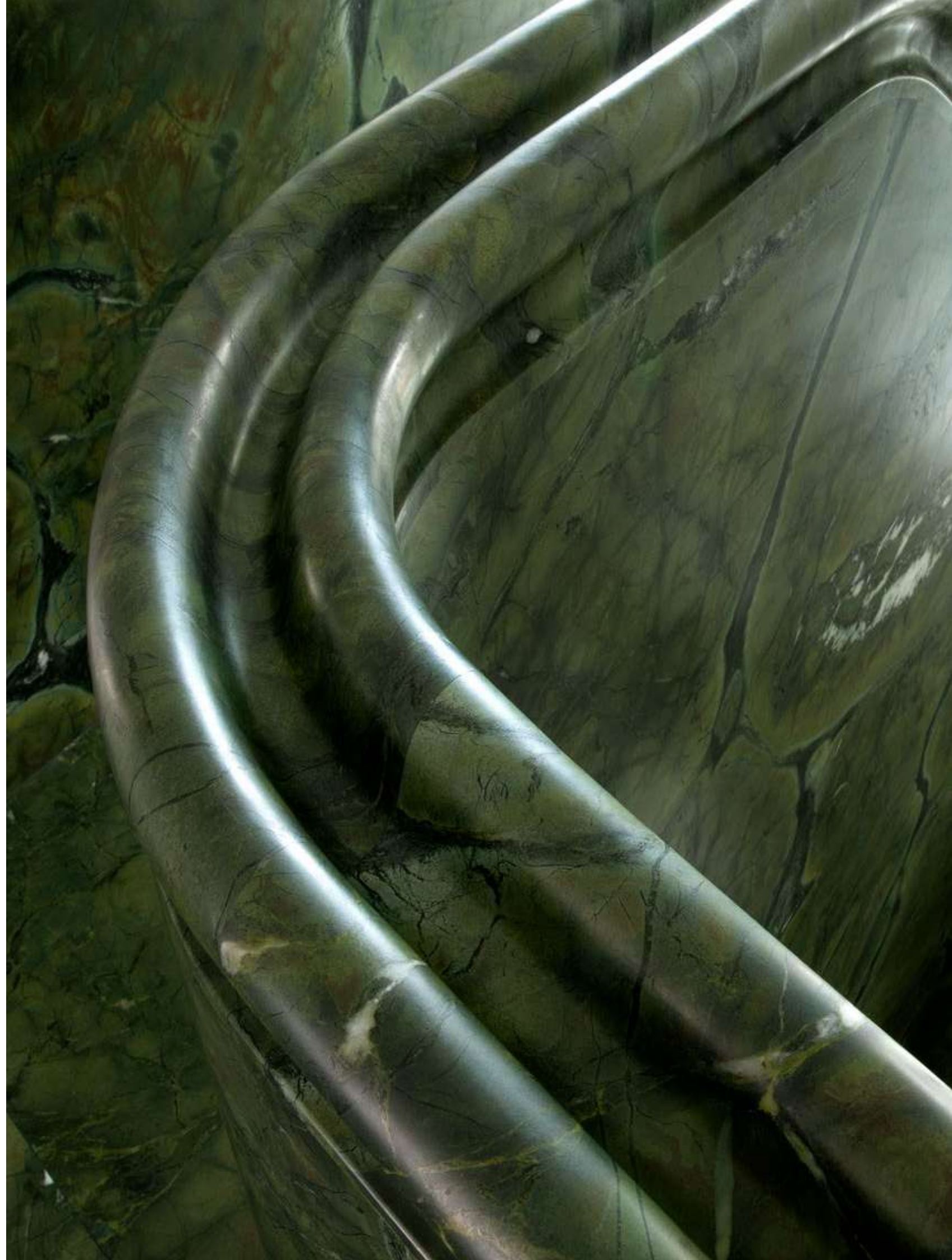


INFINITY HOUSE, COUNTY LOUTH

This nineteenth-century villa on Ireland's east coast has been transformed with a bold, deeply considered approach to colour, materiality and space, bringing renewed character while respecting its historic fabric. Designed by Róisín Lafferty.



The Usk Bathtub
The Chessleton Collection
Grand Hand Shower & Wall Bracket





GRADE II LISTED MANOR HOUSE, LONDON

This design is inspired by the original bathroom in Freddie Mercury's Kensington home and was featured on the set of the 2018 biopic Bohemian Rhapsody. Designed by Hotel Creative.

- The Double Locky Vanity Basin
- The Double Derwent Light
- The Round Tilt Mirror
- The Thurso Freestanding Shower
- The Usk Bathtub





LONDON TOWNHOUSE

This bathroom is designed with a calm, architectural clarity, its vanity concealed behind a seamless pocket door to preserve clean sight lines and flow. Wallpaper by Watts 1874 echoes the tree-lined street outside. Designed by Christian Bense.

The Usk Bathtub
The Mull Collection





WEST LONDON APARTMENT

This home underwent a comprehensive redesign that refined its layout, restored key architectural details and introduced a more cohesive material palette, creating a space that balances luxury with everyday functionality. Designed by Artichoke Interior Designs.



The Bourne Vanity Basin
The Chessleton Collection



ST GILES HOUSE, DORSET

The Spey Bathtub
The Mull Collection
The Brora WC Suite
The Spittal Freestanding Shower



The Grand Union Double Vanity Cabinet
The Chessleton Collection
The Round Tilt Mirror
The Grand Union Side Table

WOW!HOUSE 2025
This powder room has been transformed into a richly layered, inviting space where pattern, colour and considered lighting work together to enhance depth and scale. Designed by Nicola Harding & Co.



“WOW!House is an opportunity to present a designer’s point of view on a room and showcase the extraordinary craftsmanship which underpins what we do. I began working with Drummonds over ten years ago and have always admired the original techniques they preserve at their foundry. You need that authenticity if you are going to tell a story with a room.” Nicola Harding

For WOW!House 2025, Drummonds and acclaimed designer **Nicola Harding** have created a powder room that shimmers with character – a jewel-box space conceived as both retreat and revelation. Drawing on her deep knowledge of craft and colour, Harding has imagined a room that is at once intimate and theatrical: a private sanctuary where design becomes experience.

Rich tones of ruby, jade and turquoise anchor the scheme, set against semi-reflective surfaces of burnished brass and foxed mirror. The walls are layered with glazed Bejmat tiles, antiqued mirror panels and woven textiles, while a tented ceiling in a Tissus d’Hélène fabric envelops the space in soft grandeur. Upholstered cupboard doors feature durries from a new Vanderhurd collection co-designed by Harding and Christine

Van Der Hurd – a preview of their forthcoming collaboration.

“It’s a room where you’re likely to be alone,” Harding explains. *“So it can be an escape – somewhere that offers a moment of respite and reflection. We wanted to create an intoxicating atmosphere, rich with colour and texture.”*

Furnishings from Nix by Nicola Harding, including a desk, armchair and floor lamp, blend with decorative pieces from Jamb and Collier Webb, underscoring the sense of layered craft.

This year’s exhibition also marks a milestone for Drummonds, unveiling its first collection of cabinet and storage vanities: The Grand Union Collection, designed in collaboration with Harding. With its Art Deco curves, marble tops and custom-cast brass handles, it signals a new chapter in the brand’s design language – one defined by enduring materials, thoughtful proportion and the quiet authority of true craftsmanship.



SUSSEX COUNTRYSIDE MANOR, ENGLAND
A 16,000 sq ft manor house in the heart of the Sussex countryside reimagined to combine refined country-house elegance with bespoke luxury living. Designed by Gunter & Co.



The Humber Bathtub
The Bestwood Collection



19TH-CENTURY ARTS & CRAFTS PROPERTY, CHESHIRE
Accessed through a secret wardrobe door, the master bathroom of this country home boasts bold brass finishes, onyx-effect wall tiles, and statement pieces.

The Usk Bathtub
The Mull Collection
Heated Towel Rail
Classic Hand Shower & Riser Bracket



GRADE II LISTED FARMHOUSE, SURREY
 First restored in 1907, this family home underwent an extensive remodel to preserve its heritage while incorporating eclectic and contemporary elements. Designed by Ana Engelhorn Interior Design.



The Bestwood Collection
 The Single Buttermere Vanity Basin
 The Derwent Vanity Mirror
 The Bute Bathtub



The Double Buttermere Vanity Basin
The Leawood Collection
The Double Derwent Light
The Round Tilt Mirror
The Ashburn Bathtub



SKIBO CASTLE, SCOTLAND

A medieval seat transformed by US Industrialist Andrew Carnegie into a nineteenth-century summer home and now Carnegie Club private members residence. Designed by Claire Welsh Design.



The Dalby Shower
The Shamrock Shower Rose
The Mull Collection



ARTS & CRAFTS TOWNHOUSE, LONDON
 Once home to artist Maurice de Sausmarez, this Edwardian house in Muswell Hill was renovated to blend painterly influences with historic character. Designed by Emil Eve Architects.

The Syre Vanity Basin
 The Mull Collection
 The Spey Bathtub





The Kinloch Vanity Basin
 The Chessleton Collection
 The Rother WC Suite
 The Single Dalby Light



The Meon Bathtub
 The Bibury Collection
 The Single Tow Vanity Basin
 The Round Tilt Mirror
 The Clarendon Light

WOW!HOUSE 2023
 This bathroom was conceived as a boldly imaginative retreat, where mirrored terrazzo, sculptural lighting and chrome details create a richly textured, retro-futurist atmosphere. Designed by Barlow & Barlow Design.



WOODLAND HOUSE, SURREY HILLS



The Single Buttermere Vanity Basin
The Coll Collection



KNIGHTSBRIDGE TOWNHOUSE, LONDON
This Regency-inspired refurbishment preserves the charm of its history while introducing a fresh style. Designed by Elemental Studio & Tom Carey Design.



The Coll Collection
The Usk Bathtub



RITTENHOUSE SQUARE, PHILADELPHIA
 A jewel-box cloakroom defined by rich green faux-crocodile walls, fluted glass sconces and classical portraiture. Designed by Studio Friedman.

The Kinloch Vanity Basin
 The Coll Collection
 The Eden WC Suite



GRADE I LISTED GEORGIAN HALL
 Built in 1740, this award-winning seven-bedroom home blends its heritage with old Hollywood glamour and modern luxury. Designed by KW Interiors.

Index

DESIGNERS

Joelle Reid Interiors	2, 72
Maria Haidamus Interiors	4, 82
Studio Shamshiri	8
Wiggy Hindmarch	12
Naomi Astley Clarke	18, 208
Orla Read Design	24
Anouska Tamony Interiors	26
Alison Henry Design	28
Artisan Interiors	30
Nicola Harding & Co	32, 192
Perilla Edwards	38
Sandra Choi	50
Alexandra Young	56, 212
Beata Heuman	62
Jessica Helgerson Interior Design	64
Studio Havn	68
Martin Brudnizki	74
Sophie Head Interiors	78
Lee Collins, Braco Designs	80
Nina Farmer Interiors	86
Charles R. Myer & Partners	86
Jamb	96
Studio Indigo	114
Barlow & Barlow Design	120, 210
Rebirth Design Studio	132
Kirsten Norman	140
Tomoaki Koga	144
Artalenta	146
Leila Corbett	154
Marc Newson	158
Katie Grove Interiors	162
Steven Gambrel	166
Róisín Lafferty	176
Hotel Creative	182
Christian Bense	186
Artichoke Interior Designs	188, 220
Gunter & Co	196
Ana Engelhorn Interior Design	200
Claire Welsh Design	204
Emil Eve Architects	206
Elemental Studio	214
Tom Carey Design	214
Studio Friedman	216
KW Interiors	217

Index

PHOTOGRAPHERS

Angus Bremner Photography	2, 72
R. Brad Knipstein Photography	4, 82
Stephen Johnson	8
Darren Chung	12, 24, 30, 34, 38, 74, 126, 132, 158, 192, 195, 198, 210
Oliver Douglas	18, 46, 182, 208
Nick George	26
Adam Carter Photography	32
Natalie Dinham Photography	50, 164
Patrick Williamson Photography	56, 212
Kirt Washington Photography	60
Mikael Lundblad Photography	62
Aaron Leitz	64
Jody Stewart Photography	78
David Mitchell	86
Chris Close Photography	88
Taylor & Porter	90
Justin Barton Photography	91, 190
Tripod Agency	104
Jack Hardy	110
Luke White Photography	115
Alicia Waite	120
Mary Wadsworth	156, 196
Patrick Hope	162
Eric Piasecki Photography	166
Barbara Corsico	176
Alexander James Photography	186
Christopher Horwood Photography	188, 204, 220
Milo Brown Photography	194
Paul Massey Photography	200
Mariell A Lind Hansen	206
Matt Clayton Photography	214
Sean Litchfield	216
Simon Herrema	217



LONDON SHOWROOM
+44 (0) 20 7376 4499
info@drummonds-uk.com

NEW YORK SHOWROOM
+1 (212) 794 0157
usa@drummonds-uk.com

drummonds-uk.com



DRUMMONDS

LONDON · NEW YORK